



PSAT/NMSQT®

Preliminary SAT/National Merit Scholarship Qualifying Test



PSAT/NMSQT
information



Test-taking
advice and tips

Student Guide



Look inside for:



National Merit®
Scholarship Program
conducted by National Merit Scholarship Corporation

TO ENTER THE 2027 NATIONAL
MERIT SCHOLARSHIP PROGRAM:

- ✓ Take the Preliminary SAT/National Merit Scholarship Qualifying Test (PSAT/NMSQT®) in fall 2025
- ✓ Meet other entry requirements (see inside)

www.nationalmerit.org

About College Board

College Board reaches more than 7 million students a year, helping them navigate the path from high school to college and career. Our not-for-profit membership organization was founded more than 120 years ago. We pioneered programs like the SAT® and AP® to expand opportunities for students and help them develop the skills they need. Our BigFuture® program helps students plan for college, pay for college, and explore careers. Learn more at [cb.org](https://collegeboard.org).

About National Merit Scholarship Corporation (NMSC)

NMSC® is an independent, not-for-profit organization that operates without government assistance. NMSC conducts the National Merit® Scholarship Program, an annual academic competition for recognition and college scholarships. The PSAT/NMSQT® is the screening test for high school students who wish to participate in the National Merit Scholarship Program.

If you have questions about any aspect of the National Merit Scholarship Program, including student participation requirements, the selection process, and awards offered, see the NMSC section of this publication.

The PSAT/NMSQT

The Preliminary SAT/National Merit Scholarship Qualifying Test (PSAT/NMSQT) is cosponsored by College Board and National Merit Scholarship Corporation. Contact customer service if you have suggestions, questions, or comments about exam setup, administration, or score reports. If you wish to report test administration irregularities, you must notify the test coordinator or the PSAT/NMSQT office immediately.

PSAT/NMSQT Customer Service

PHONE: 866-433-7728

INTERNATIONAL: +1-212-713-8105

EMAIL: psathelp@info.collegeboard.org

© 2025 College Board. College Board, Advanced Placement, AP, BigFuture, CLEP, SAT, and the acorn logo are registered trademarks of College Board. AP Potential, Bluebook, Connections, and PSAT are trademarks owned by College Board. PSAT/NMSQT is a registered trademark of College Board and National Merit Scholarship Corporation. NMSC, National Merit, and the corporate “Lamp of Learning” logo are federally registered service marks of National Merit Scholarship Corporation. All other marks are the property of their respective owners. Visit College Board on the web: collegeboard.org.

Khan Academy is a registered trademark in the United States and other jurisdictions.

2526-PN-079-5

Contents

College Board

1	Test-Taking Information
1	Using This Guide
1	How the PSAT/NMSQT Is Organized
2	Bluebook Digital Testing
3	Before You Test
4	Away Students
4	Special Considerations
5	Test Dates and Fee
5	Testing Devices
5	If You Need Testing Accommodations
7	English Learner Support
7	Privacy Policies
7	Telemarketing Scams
7	Test Question Inquiries
7	Additional Information on the SAT Suite of Assessments
8	Prepare for the PSAT/NMSQT
8	Test Preview
8	Full-Length Adaptive PSAT/NMSQT Practice Tests
9	Official SAT Prep on Khan Academy
9	Student Question Bank
9	Paper-Based Practice Tests
9	The Official SAT Study Guide
10	What the Reading and Writing Section Is Like
11	What the Math Section Is Like
12	Information You'll Need on Test Day for Digital Testing
12	Test Day Items
12	Test Day Steps
13	Submitting Your Answers
14	After the Test
14	How the PSAT/NMSQT Is Scored
14	Retesting
15	BigFuture School and Connections
17	Getting Your Scores
18	Explore Career Options
18	College Board National Recognition Program
19	Scholarship Programs

20	PSAT/NMSQT Testing Rules
20	Introduction
20	Section 1. Taking the PSAT/NMSQT
21	Section 2. Items You Cannot Bring to the PSAT/NMSQT
22	Section 3. Behaviors That Are Not Allowed
22	Section 4. Score Cancellation
24	Section 5. Privacy
26	Section 6. Miscellaneous
27	Section 7. Policies and Requirements
27	Section 8. Intellectual Property - Ownership of Materials
27	Section 9. ARBITRATION OF DISPUTES AND CLASS ACTION WAIVER
30	Section 10. Venue and Waiver of Jury Trial
30	Section 11. LIMITATIONS OF LIABILITY
30	Section 12. Disclaimer of Warranties
31	Section 13. Severability
31	Section 14. Restricted Registrations
31	Section 15. Accessibility of These Rules

National Merit Scholarship Program

33	Overview
34	Steps in the 2027 National Merit Scholarship Competition
35	The 2027 Competition Begins in 2025
35	Entry Requirements
36	When to Take the Test
37	Eligibility Verification
38	Program Recognition
38	NMSC Selection Index
38	Commended Students
38	Semifinalists
39	Finalists
39	Choosing Scholarship Winners
40	Types of Scholarships
40	National Merit \$2500 Scholarships
41	Corporate-sponsored Scholarships
41	College-sponsored Merit Scholarships
42	Scholarship Sponsors
42	Corporations, Business Organizations, and Individual Donors
50	Colleges and Universities

College Board



Test-Taking Information

Using This Guide

Taking the PSAT/NMSQT® is a great way to find out how prepared you are for college and career. The PSAT/NMSQT is the qualifying test for entry to the National Merit® Scholarship Program (described in the second part of this guide). The test also connects you to College Board programs and services that can propel you to opportunities you’ve earned. We’ve created this guide to help you:

- Become familiar with the test and the Bluebook™ testing application so you know what to expect on test day.
- Learn about the structure of the test, how to prepare for it, and how it is scored.
- Preview the PSAT/NMSQT Testing Rules. **You will be required to review and agree to the Testing Rules in Bluebook before testing** and you should review them in this guide ahead of time.

IMPORTANT: You will be bound by the Testing Rules as they exist on test day. Prior to testing, you must review any updates to these Testing Rules, which are available at cb.org/pn-rules.

How the PSAT/NMSQT Is Organized

The PSAT/NMSQT measures the knowledge and skills that you are learning in school and that matter most for college and career readiness. There are 2 sections of the PSAT/NMSQT—(1) Reading and Writing and (2) Math.

The PSAT/NMSQT, and all tests in the SAT® Suite of Assessments, uses multistage adaptive testing. Each test section (Reading and Writing, Math) is divided into 2 equal-length, separately timed parts, called modules. You answer a set of questions in the first module before moving on to the next. The questions that you are given in the second module depend on how you performed on the first module.

This type of adaptive testing allows for a much shorter, but just as reliable, assessment that delivers accurate scores more efficiently.

The test breaks down like this:

TEST ORGANIZATION		
Section	Time Allotted (min.)	Number of Questions
Reading and Writing	64	54
Math	70	44

You must complete all sections of the test based on your approved timing. If you have been approved for extended time (time and one-half, double time, or more), you have the option of moving to the next part of the test before your full extended time expires, once the standard testing time has passed. We encourage you to use all of the time you need and are approved for, but you are not required to stay your full extended time if you’ve finished testing or are ready to move on sooner. Once you’ve finished testing, wait until testing staff have confirmed that your test has been submitted and you’re dismissed from testing. If you leave before dismissal, your test may be considered incomplete and your scores may be ineligible for scholarship consideration or may be subject to cancellation. Do not close your laptop lid or cover or turn off your tablet screen at any point until you are dismissed.

Bluebook Digital Testing

Bluebook is our custom-built application you'll use to take the PSAT/NMSQT. Ask your school how to download and access Bluebook. They will provide you with a sign-in ticket. You may be able to familiarize yourself with key aspects of the app before the test during your school's student readiness activities. For more information about readiness, please see Before You Test on page 3.

If you want to preview Bluebook, you can download the application to your personal device.

Bluebook Tools

Bluebook includes plenty of test tools. Here are some examples:

- **Mark for review:** You can flag and return to any question within a given test module that you want to come back to later.
- **Testing timer:** A clock counts down the time remaining in each module. You can hide the timer, and you get an alert when 5 minutes remain in the module. When there are only 5 minutes remaining, the clock can no longer be hidden.
- **Calculator:** A built-in Desmos calculator is available for the entire Math section. The calculator is provided in the Bluebook practice test to allow you to practice with it before the test. (You can also bring your own acceptable calculator; please see psat.org/calculator for more information.)
- **Line reader:** Use this tool to focus as you read test content.
- **Reference sheet:** On the Math section, you have access to a list of common formulas.
- **Highlights & Notes:** On non-math questions, you can highlight any part of a passage and leave yourself a note. You can change the highlight color, add an underline, make a note, or delete the highlight. A Windows tablet must have an external keyboard in order to use the Highlights & Notes tool in Bluebook.
- **Option eliminator:** If you think an answer option is wrong, you can cross it out.
- **Question menu:** Students can see which questions they skipped or marked for review and navigate to any question in the module.

You can use keyboard shortcuts on laptops or pinch and zoom on tablets to get a closer look at any part of the question, and you can set up your device before testing to use color contrast.

Digital Testing Disruptions

An internet connection is required to start the test, but Bluebook will keep running even if your connection drops momentarily. At the end of the test, if you're still offline, work with your school to make sure your answers are submitted once internet access resumes. If your device battery runs down, you can simply plug in, restart your device, and pick up where you left off—all your work will be saved, and you won't lose testing time.

If the app crashes during your exam, just relaunch it and hit **Resume Testing**. Raise your hand so the proctor can approve your re-entry, and you'll return to the question you were on. The testing timer will be paused until you resume testing.

Before You Test

If you plan to take the PSAT/NMSQT at the school you normally attend, your school or district will register you and let you know if you need to bring your own or a school-issued device or if one will be provided for you on test day. School staff will also provide you with sign-in information that is unique to you.

Before you test, staff at your school may hold a student readiness check. In this session, you'll sign in to Bluebook with a sign-in ticket that's unique to you, run a quick device check, complete exam setup, and try out a test preview. During exam setup, which will happen either during the student readiness check or right before the test, you'll have the chance to confirm your personal information and you'll be required to review and agree to the PSAT/NMSQT Testing Rules. You should review them beforehand. (See PSAT/NMSQT Testing Rules on page 20.) It's important to confirm your personal information is correct after you sign in to the testing application with your sign-in ticket. If your information is incorrect or you received someone else's sign-in ticket, tell school staff immediately.

During exam setup, you'll also have the opportunity to answer questions about yourself, your educational experience, and your plans for after you graduate high school. All questions are optional. If any of your answers differ from answers you have given us on previous in-school tests, we'll use your latest information.

College Board may use the information you provide:

- To verify your identity;
- To administer the test, including with any necessary third parties;
- To provide your score information;
- To maintain the fairness and validity of our tests;
- For test security purposes;
- For test accommodations purposes;
- On a de-identified basis, for psychometric and educational research purposes, to demonstrate the effectiveness of our programs and services, and to maintain, develop, support, improve, and diagnose our services and applications;
- To disclose as required by law, when we believe in good faith that it's necessary to protect our rights, protect an individual's safety or the safety of others, investigate fraud, or respond to a government request.

Your high school, school district, and state may receive your responses. Institutions that receive your information are required to keep it confidential and to follow College Board guidelines for using this information.

College Board sends information you provide to our cosponsor, National Merit Scholarship Corporation (NMSC®), for it to consider your eligibility for the National Merit Scholarship Program (see the second part of this guide).

If you choose to use the BigFuture® School mobile application, we'll use your information to provide you with educational information and insights about college and career options. If you opt in to Connections™, we'll use your information to match you with nonprofit colleges and universities, nonprofit scholarship providers, and government agencies running educational programs that are looking for students like you. Note: your school, district, or state may choose to not provide access to Connections for its students.

More information about the BigFuture School mobile app and Connections can be found in BigFuture School and Connections on page 15.

See the PSAT/NMSQT Testing Rules for more information on use and disclosure of the information you may choose to provide.

Away Students

If you are a homeschooled student or plan to take the PSAT/NMSQT at a school that's different from the school you attend, you'll need to complete the following steps before the deadline:

- Use our [in-school assessment search tool](#) to find a testing institution near you.
- Reach out to staff at the testing institution 4 weeks before the testing window begins to request to be included in their registration file. (Check the administering school district website for applicable deadlines. Some districts may need this step completed earlier.)

Provide the following information for registration:

- ◆ First and last name.
- ◆ Date of birth.
- ◆ Name/Attending Institution (AI) code for the school you normally attend and student ID (if you're homeschooled, you'll only need to share that you are homeschooled). Ask your school counselor if you do not know your AI code or student ID.
- ◆ Gender.
- ◆ Your Services for Students with Disabilities (SSD) number if you are approved to test with accommodations.
- Confirm whether the testing institution will provide you with a device or if you need to bring a testing device on test day.

If you're homeschooled and qualify for recognition in the National Merit Scholarship Program, NMSP will send notification to the address you provide during exam setup.

If you would like to find out more about testing at a school you do not normally attend, visit our [Homeschooled and Away Students](#) webpage.

IMPORTANT: Away Students must bring a valid photo ID with them for check-in on test day. Please see the PSAT/NMSQT Testing Rules for information about acceptable photo identification.

Special Considerations

Here are some situations you may need to prepare for.

If you know in advance that you cannot take the test when your school offers it:

Tell your counselor as soon as possible that you have a conflict, such as a religious observance. You may be able to take the test later in the month (during the testing window, which is defined as the period of time the test can be administered at your school) or as an Away Student (see previous section) at a nearby school that has selected a different test date. When you reach out to the school you don't normally attend to register, be prepared to provide your school code and student ID, which you can get from your counselor. Be sure to bring your acceptable photo ID with you on the day of the test. You'll need to keep your ID with you at all times, especially if you leave the testing room.

If you are homeschooled and want to take the PSAT/NMSQT: Make arrangements in advance with your local school or another nearby school that is administering the test. Contact PSAT/NMSQT customer service (see page ii) if you need help finding a school in your area that's giving the test. Visit our [Homeschooled and Away Students](#) webpage for more information.

You will be studying in another country when the test is given: Use the [in-school assessment search tool](#) and include the country where you'll be in your search. You'll need to contact the coordinator at that school with the information listed above to request registration at least four weeks before the testing window begins.

You missed the test but want to enter the National Merit Scholarship Program:

For information about another route of entry to the National Merit Scholarship Program, see Unable to Take the PSAT/NMSQT? on page 37.

Test Dates and Fee

The PSAT/NMSQT testing window is October 1–31, 2025. Ask your counselor or principal when you will test. While different students from your school may test on different days, each student is only allowed to take the test once during a testing window, unless an irregularity occurs that warrants a retest.

The fee for the 2025 PSAT/NMSQT is \$18, but you might not have to pay it—some districts and schools cover all or part of the cost for their students. Schools sometimes charge an additional fee for administrative costs.

Testing Devices

Most schools participating in the PSAT/NMSQT will use school-managed devices for testing. In those cases, the school staff will have downloaded Bluebook and made sure that the testing device is charged and ready for testing. It is good practice for you to review your device's battery life and notify staff if it's not fully charged.

If your school allows you to test on a personal device, you must download the exam app onto your device before testing. (A personal device is one that you bring for your use in testing and that is not provided by your school. Personal Chromebooks cannot be used for testing.) Your device must also be able to connect to Wi-Fi and be charged enough to stay on for roughly 3 hours. We recommend you bring a power cord or portable charger, but we can't guarantee you'll have access to an outlet. You're permitted to bring an external mouse for your device and an external keyboard if your device is a tablet. You can't use detachable device privacy screens. All other applications and programs must be closed during the test.

If you are bringing a personal device for testing, visit [Approved Testing Devices](#) for more information about device requirements.

If You Need Testing Accommodations

If you have a disability that requires accommodations such as a screen reader, extra breaks, or permission to test blood sugar, be sure to have your school request College Board approval at least seven weeks before the test date you need the accommodations for. Requests for accommodations are handled by the College Board SSD office. For more information about requesting accommodations and timing, visit our [Advice for Students and Families](#) webpage.

When considering accommodations, note the following:

- Work with your school's SSD coordinator or counselor for accommodations requests. Your SSD coordinator or other appropriate school staff can help determine what accommodations are best for you and submit a request online.
- The quickest and most efficient way to request accommodations is to work with your school. However, if you want to request accommodations without your school, download and submit a Student Eligibility Form from the [Requesting Without Going Through the School](#) webpage.
- Once approved for accommodations, with some exceptions, you remain approved and do not have to apply again when taking another College Board test.
- If you move to a new school after you've been approved for accommodations, provide them with your SSD number.
- If you're approved for extended time for math, you'll get it just for math; but if you're approved for extended time for reading, you'll get it for the whole test.
- Talk to your SSD coordinator to confirm what accommodations you're approved for and any additional information you need for testing.

- If you are approved for text-to-speech (embedded in Bluebook, with no configuration needed) or screen reader (non-embedded), be sure to practice with your accommodation ahead of test day to ensure you understand how it will work with the digital test.
- If you're interested in participating in the National Merit Scholarship Program, make sure you receive your approved accommodations in time to test. If you won't receive them in time, your test should be rescheduled. If you take the test without your approved accommodations, your test coordinator should complete an Irregularity Report. You may need to retest. If you do not take the test and wish to enter the National Merit Scholarship Program, see [Unable to Take the PSAT/NMSQT?](#) on page 37.
- **NEW!** The new [Accommodations & Supports Dashboard](#) is a student portal where you can see your decision letters and accommodations. Make sure your school's SSD coordinator has your email address so that you'll be able to access the dashboard easily.

Accommodations and Digital Testing

Most students with accommodations test digitally, and many accommodations are provided right in Bluebook. For example, if you're approved for extended time, you'll receive a digital exam enabled with your approved amount of extended time per section. If you need large print, you can use zoom. If you need assistance with reading, you might be approved for Text-to-Speech (Embedded) or Screen Reader (Non-Embedded).

Check your accommodations in Bluebook prior to testing to ensure you know what accommodation you've been approved for. Ask your SSD coordinator to submit an accommodations request if it's not what you need. Visit the [Using Accommodations](#) webpage for more information about digital accommodations.

Some students approved for accommodations test with the standard format and testing timing. Examples of these types of accommodations include permission for small-group testing, food/drink/medication, and permission to test blood sugar.

The PSAT/NMSQT is accessible to students approved to use assistive technology, including a screen reader and text-to-speech. If you are approved for text-to-speech, you'll use the tool built into Bluebook. No setup is needed. If you are approved for a screen reader, you'll use your own assistive technology software or the software that is part of the operating system on your testing device. For screen readers or other assistive technology, you'll need to open and start the assistive technology device or software before you open Bluebook for practice and for testing. On test day, adjust any necessary settings before you start to check in for the digital test. Visit our [Accommodations and Assistive Technology](#) webpage for detailed information about using assistive technology with Bluebook. Additionally, the app has extensive content to answer your questions about setup, navigation, and tools to help you access test content.

IMPORTANT: Starting in 2025, if you have an accommodation for extended time, once the standard time has elapsed for a module, you can move on when you're ready rather than having to wait until your approved time is up. We encourage you to use your full allotted time and you should only move ahead if you have completed the module. As always, at the end of the test, wait until testing staff have confirmed that your test has been submitted before closing the lid to your laptop, turning off your tablet screen, closing Bluebook, or shutting down your device. Please visit [SSD Updates](#) for more information.



Important

Bluebook now has a built-in (embedded) text-to-speech feature for students approved for this accommodation. For more information, please see our [Accommodations and Assistive Technology](#) webpage.



Additional Guidance

It is very helpful to practice taking a digital test with the technology you plan to use to test. Please see [Prepare for the PSAT/NMSQT](#) on page 8 for more information about practice.

English Learner Support

Supports such as word-to-word dictionaries, translated test directions, and extended time are available for non-English proficient or limited-English proficient English learners. If you need English learner (EL) support, work with your school to help ensure it will be there on test day. Talk to your school counselor if you'd like more information.

Privacy Policies

College Board recognizes the importance of protecting your privacy. Please review our privacy policies at collegeboard.org/privacy-center ("Privacy Policies") and the PSAT/NMSQT Testing Rules to understand our collection, use, and disclosure of your personally identifiable information.

Telemarketing Scams

We sometimes get reports of phone scams when callers posing as employees of College Board or National Merit Scholarship Corporation try to sell test preparation products or request sensitive, personally identifying information, such as credit card and Social Security numbers. College Board and NMSC do not make unsolicited phone calls or send emails to students or families requesting this type of information. This type of activity, known as telemarketing fraud, is a crime and should be reported to the Federal Communications Commission (FCC). Please visit [Important Information About Telemarketing and Internet Scams](#) for more information.

Test Question Inquiries

If you find what you consider to be an error or an ambiguity in a test question, tell the proctor immediately after the test. You also have the option to complete the [Test Questions Error or Ambiguity form](#) if you prefer or if testing is already over.

In your inquiry, provide your name and email address, the date you took the PSAT/NMSQT, the name and address of the school where you took the test, the test section and module, the test question (as well as you can remember), and an explanation of your concern about the question.

College Board will send you a response after your inquiry has been reviewed thoroughly by subject-matter specialists. If you submit a report for what you consider to be an error or an ambiguity in a test question, you understand that College Board may need to hold your PSAT/NMSQT score for review. As a result, your score may not be available by the published release date for your administration.

Additional Information on the SAT Suite of Assessments

Procedures to Ensure Fairness and Access

College Board combats any bias in our tests with our review processes. Fairness reviewers help ensure that test materials are accessible to all students, have no offensive or insensitive content, and aren't made easier or harder by factors outside the subject being measured. You can download a copy of the [Assessment Framework for the Digital SAT Suite](#) to learn about fairness on the tests.

Prepare for the PSAT/NMSQT

You may have an opportunity to practice for the PSAT/NMSQT before testing as part of your school's student readiness activities. The school where you're testing will register you and provide sign-in credentials for Bluebook during these activities.

College Board offers many official ways to help you prepare for the PSAT/NMSQT at sat.org/practice. Here are some of them:

Test Preview

To prepare for the PSAT/NMSQT, you'll have access to a test preview within Bluebook. This tool helps you:

- Get familiar with functions in the app.
- See the structure of the test.
- Try a small sample of reading and writing and math questions to familiarize yourself with the kinds of questions you'll encounter on test day and with how to properly enter your answers.
- Try all the testing tools and experience how the digital tests work with any assistive technology you're approved to use.

Full-Length Adaptive PSAT/NMSQT Practice Tests

Taking a full-length practice test for the PSAT/NMSQT will let you experience digital testing and familiarize yourself with test content, including the types of questions you'll answer and the exam tools you'll use to take the test. Your school may run a full-length practice session during the student readiness check. You may also choose to access additional practice tests in Bluebook during your own study time using the sign-in credentials provided by your school. If you'll be using a personal device for testing, you can also make sure your device supports the app and is ready to use on test day.

Both sections on the PSAT/NMSQT, (1) Reading and Writing and (2) Math, have 2 modules. Depending on how you answer the questions in the first module, you'll be routed to a second module, which has a different mix of difficulty levels. The mix of questions in the second module is, on average, either of higher difficulty or of lower difficulty than the mix in the first module. Taking a practice test in Bluebook helps you gain experience and comfort with the way you'll be assessed on test day.

The full-length practice tests will also give you a score.

1. Download the Bluebook app at bluebook.collegeboard.org.
2. Go to **Practice and Prepare** on the Bluebook homepage, and select **Full-Length Practice**. (You will need the sign-in credentials provided by your school to access full-length practice.)
3. After you've finished the practice test in Bluebook, go to **My Practice** at mypractice.collegeboard.org and sign in with the same credentials provided by your school to view your score results and to review your practice exam questions and their skill level, as well as the answers, and explanations.

Official SAT Prep on Khan Academy

The SAT course content on Khan Academy® includes videos, articles, and worked examples designed to help you understand and experience the SAT Suite. Visit khanacademy.org/digital-sat.

Student Question Bank

You can use the Student Question Bank to design your own practice. The question bank has thousands of official practice questions and you can filter by assessment, section (Reading and Writing or Math), domain, skill, and difficulty level. You can go to **My Practice** at mypractice.collegeboard.org and sign in with the same credentials provided by your school to access the **Student Question Bank**.

Additional Practice

You can also try targeted practice questions in My Practice. If you click on the **Practice Specific Questions** link, My Practice gathers a tailored set of questions from our Student Question Bank based on your performance on a practice test. These questions are specifically designed to help you build your skills at a level that's right for you.

Question of the Day

The Question of the Day web app is a fun and fast way to check your knowledge. Each day, you can choose to answer a Reading and Writing question or a Math question. The content comes from the makers of the SAT Suite of Assessments, so you can answer official questions in a casual setting, earn badges, and build your streak. For more information, visit gotd.collegeboard.org.

Paper-Based Practice Tests

College Board provides downloadable paper versions of practice tests for those students who need to test with paper-based accommodations on test day. Since the PDF versions of our practice tests are nonadaptive, they're recommended only for students who will test with paper-based accommodations on test day. Using these practice materials does not mean you've been approved to test with a particular accommodation. These paper versions of the tests are longer and require more questions to assess your knowledge and skills. To practice on paper, you'll need to ask your counselor to help you obtain the test or print these downloadable versions of the practice test at sat.org/digital-practice.

The Official SAT Study Guide

For additional tips on using practice tests effectively, check out the updated version of **The Official SAT Study Guide®** from the College Board bookstore or wherever you find test prep materials. While you can take practice tests for free in Bluebook, taking a printed practice test in the study guide is another strategy to help you build your endurance and strengthen your understanding of the questions on the test.

What the Reading and Writing Section Is Like

The Reading and Writing section of the PSAT/NMSQT is designed to measure your success with building critical college and career readiness in literacy. In this section, you'll answer multiple-choice questions requiring you to read, comprehend, and use information and ideas in texts; analyze the craft and structure of texts; revise texts to improve the rhetorical expression of ideas; and edit texts to follow core conventions of Standard English.

Passages in this section, which serve as the basis for answering test questions, represent the subject areas of literature, history/social studies, the humanities, and science. There is a single question per passage.

Select questions in this section are accompanied by an informational graphic.

Reading and Writing Section Overview

Test length:

- 1st module: 25 operational questions and 2 pretest questions
- 2nd module: 25 operational questions and 2 pretest questions

Total: 54 questions

Time per module:

- 1st module: 32 minutes
- 2nd module: 32 minutes

Total: 64 minutes
(1.19 minutes per question)

Questions in the Reading and Writing section represent 1 of 4 content domains, shown in the table that follows. To help you budget your time, questions that test similar skills and knowledge are grouped together in Bluebook and then arranged from easiest to hardest. Pretest questions don't count toward your score.

READING AND WRITING SECTION CONTENT DOMAINS AND QUESTION DISTRIBUTION			
Content Domain	Domain Description	Skill/Knowledge Testing Points	Question Distribution
Craft and Structure	Measures the comprehension, vocabulary, analysis, synthesis, and reasoning skills and knowledge needed to understand and use high-utility words and phrases in context, evaluate texts rhetorically, and make connections between topically related texts	Words in Context; Text Structure and Purpose; Cross-Text Connections	13–15 questions
Information and Ideas	Measures comprehension, analysis, and reasoning skills and knowledge and the ability to locate, interpret, evaluate, and integrate information and ideas from texts and informational graphics (tables, bar graphs, and line graphs)	Central Ideas and Details; Command of Evidence (Textual, Quantitative); Inferences	12–14 questions
Standard English Conventions	Measures the ability to edit texts to conform to core conventions of Standard English sentence structure, usage, and punctuation	Boundaries; Form, Structure, and Sense	11–15 questions
Expression of Ideas	Measures the ability to revise texts to improve the effectiveness of written expression and to meet specific rhetorical goals	Rhetorical Synthesis; Transitions	8–12 questions

These specifications are for the adaptive version of the digital test, which most students will take. Students approved for certain testing accommodations—such as a human reader, raised line drawings, or paper test forms—will test using a nonadaptive version of the digital PSAT/NMSQT. This nonadaptive version has a slightly higher number of test questions in each module to account for the fact that the test is not adaptive. Practice for this nonadaptive version of the test is also available in Bluebook. You can learn more about nonadaptive test specifications in Appendix E of the [Assessment Framework for the Digital SAT Suite](#).

What the Math Section Is Like

The Math section of the PSAT/NMSQT is designed to measure your success with building critical college and career readiness knowledge and skills in math. It focuses on key elements of algebra, advanced math, problem-solving and data analysis, and geometry and trigonometry. Over the course of the Math section, you'll answer multiple-choice and student-produced response questions that measure your fluency with, understanding of, and ability to apply the math concepts, skills, and practices that are most essential.

Approximately 30% of math questions are set in context. These in-context “word” questions require you to consider a science, social studies, or real-world scenario and apply your math skills and knowledge, along with an understanding of the context, to determine the answer to each.

Select questions in this section are accompanied by an informational graphic.

Math Section Overview

Test length:

- 1st module: 20 operational questions and 2 pretest questions
- 2nd module: 20 operational questions and 2 pretest questions

Total: 44 questions

Questions from all 4 content domains appear in each test module. Across each module, questions are arranged from easiest to hardest, allowing you to have the best opportunity to demonstrate what you know and can do. Pretest questions don't count toward your score.

Time per module:

- 1st module: 35 minutes
- 2nd module: 35 minutes

Total: 70 minutes
(1.59 minutes per question)

MATH SECTION CONTENT DOMAINS AND QUESTION DISTRIBUTION

Content Domain	Domain Description	Skill/Knowledge Testing Points	Question Distribution
Algebra	Measures the ability to analyze, fluently solve, and create linear equations and inequalities as well as analyze and fluently solve equations and systems of equations using multiple techniques	Linear equations in 1 variable; Linear equations in 2 variables; Linear functions; Systems of 2 linear equations in 2 variables; Linear inequalities in 1 or 2 variables	13–15 questions
Advanced Math	Measures skills and knowledge central for progression to more advanced math courses, including demonstrating an understanding of absolute value, quadratic, exponential, polynomial, rational, radical, and other nonlinear equations	Equivalent expressions; Nonlinear equations in 1 variable and systems of equations in 2 variables; Nonlinear functions	12–14 questions
Problem-Solving and Data Analysis	Measures the ability to apply quantitative reasoning about ratios, rates, and proportional relationships; understand and apply unit rate; and analyze and interpret 1- and 2-variable data	Ratios, rates, proportional relationships, and units; Percentages; 1-variable data: distributions and measures of center and spread; 2-variable data: models and scatterplots; Probability and conditional probability; Inference from sample statistics	7–9 questions
Geometry and Trigonometry	Measures the ability to solve problems that focus on area and volume; lines, angles, triangles, and trigonometry	Area and volume; Lines, angles, and triangles, including right triangles and right triangle trigonometry	4–6 questions

These specifications are for the adaptive version of the digital test, which most students will take. Students approved for certain testing accommodations—such as a human reader, raised line drawings, or paper test forms—will test using a nonadaptive version of the digital PSAT/NMSQT. This nonadaptive version has a slightly higher number of test questions in each module to account for the fact that the test is not adaptive. Practice for this nonadaptive version of the test is also available in Bluebook. You can learn more about nonadaptive test specifications in Appendix E of the [Assessment Framework for the Digital SAT Suite](#).

Information You'll Need on Test Day for Digital Testing

Be prepared for digital testing by making sure you bring only what you need for the test. You'll have your testing device, but won't be able to use or access any other personal electronic devices, such as a mobile phone or wearable technology, during the test. Review the other important guidelines in this section to make sure you understand the policies that cover your PSAT/NMSQT testing experience.

This section also includes information about test day technical support.

Test Day Items

The following items are required for taking the PSAT/NMSQT:

- A fully charged, acceptable testing device with Bluebook already downloaded and exam setup complete.
- A pen or pencil for scratch work.
- A valid photo ID for check-in if testing as an Away Student.

Though not required, consider bringing:

- Snacks and drinks (which must be under your desk during testing).
- An acceptable calculator for the Math section (if you prefer using a handheld calculator to using the embedded Desmos calculator in Bluebook). Please see psat.org/calculator for more information.
- Extra batteries, a power cord, and backup calculator.

For more information about what to bring on test day, see the [What to Bring on PSAT/NMSQT Test Day](#) webpage.

Test Day Steps

This section summarizes important guidelines for digital testing. See Section 1 of the PSAT/NMSQT Testing Rules to make sure you cover all the steps to successfully prepare to take the PSAT/NMSQT.

- If you are allowed to bring your own or a school-issued device, plan ahead and bring equipment that's in good working order with enough battery power to last for about 3 hours. Your testing device must be able to connect to new Wi-Fi networks, and you may need to update your operating system to support the digital test. Testing staff might not have extra batteries or calculators.
- If you are allowed to bring your own device, you need to download the Bluebook app from bluebook.app.collegeboard.org.
- If you're testing with extended time, bring a power cord; your testing site should provide an outlet for recharging if needed.
- During exam setup, which will take place as either part of your school's student readiness check or right before the test, you'll be required to review and agree to the Testing Rules. As part of exam setup, you'll also have the option to provide additional information about yourself. You may also have the opportunity to provide a mobile number to access the BigFuture School mobile application to jumpstart your college and career planning with easy access to your scores and career insights.
- On test day, you'll follow instructions to connect to Wi-Fi, complete exam check-in on your testing device, and type a brief statement saying that you agree to follow all rules for the exam.

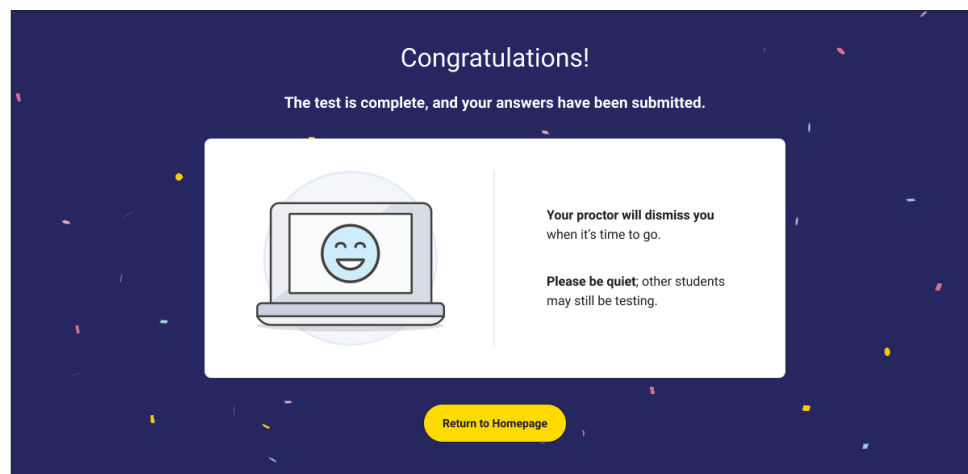
- During testing:
 - ◆ Head coverings worn for medical or religious reasons are permitted during testing as long as they don't obstruct testing staffs' ability to view your eyes and ears. You're not permitted to wear other head coverings while testing; if you are wearing one, store it under your desk. If you're wearing a hooded shirt in the testing room, your hood must stay down during testing.
 - ◆ Store any snacks or drinks you bring under your desk. You may only eat snacks during breaks. The testing staff will tell you where you can go to have your snack.
 - ◆ You must remain in the testing site for the duration of the test. If you leave before you're dismissed, your scores are subject to cancellation.
 - ◆ Keep your laptop open or your tablet uncovered and on during the entire duration of testing. Closing your laptop lid or covering your device may result in a loss of your responses.

Submitting Your Answers

Do not close the lid to your laptop, turn off your tablet screen, close Bluebook, or shut down your device until testing staff have confirmed that your tests have been submitted and you are officially dismissed from testing.

In the event of an internet disruption at the end of the test, or another issue that keeps you from submitting your answers, you'll need to follow instructions provided by your school to complete submission. This may include waiting until the internet is back online to leave the testing room, or returning later with your testing device once the internet service resumes.

If answers aren't received by the end of the submission period, College Board may cancel your scores or report them for guidance purposes only.



Do not close the lid of your laptop, turn off your tablet screen, close Bluebook, or shut down your device until testing staff confirm that your answers have been submitted.

After the Test

Once you’ve taken the PSAT/NMSQT, the next step is to access your scores, understand what they mean, and track your progress. Use the information in this section to help you make the most of your scores. You can also start to explore additional College Board tools to help you plan for the future.

How the PSAT/NMSQT Is Scored

The SAT Suite uses a multistage adaptive test design with item response theory (IRT) methodology to precisely measure students’ knowledge and skills with fewer questions in less time. Every test includes a standardized set of question types and measures the same content domains, so all students have equitable opportunity to demonstrate their strengths. For most students, it is better to guess than leave a question blank, especially if you can eliminate one or two wrong answers first. To learn more about how assessments in the SAT Suite adapt to your performance, watch our [What is Digital SAT Adaptive Testing?](#) video.

TEST SCORING		
PSAT/NMSQT Score Reported	Details	Score Range
Section Scores (2)	Reading and Writing (RW)	160–760
	Math (M)	160–760
Total Score	Sum of the 2 section scores	320–1520
NMSC Selection Index Score	$\frac{2RW + M}{10}$	48–228

Retesting

If you encounter an issue on test day that makes you want to consider canceling your score, you may be able to work with your school to retest later in the testing window. If you retest, you must take the entire test again. You cannot retest only one section or part of an assessment. (For more information on retesting, please see Section 6 in the Testing Rules at the end of this guide.)

Contact your school’s test coordinator immediately to report any issues you encountered on test day.

If you do not want your NMSC Selection Index score used for participation in the National Merit Scholarship Program, you must contact NMSC immediately. See Removing Your Score from NMSC Consideration on page 37 for further details. For more information on Selection Index scores, see NMSC Selection Index on page 38.

BigFuture School and Connections

The Power to Plan for Your Future the Moment You Get Your PSAT/NMSQT Scores

BigFuture School allows students to take control of their college and career planning—starting with easy access to their scores and career insights. When you take the PSAT/NMSQT, you may have an opportunity to access BigFuture School and:

- View your PSAT/NMSQT scores and Career Insights Snapshot
- Explore customized messages about planning for career and college, and paying for college
- Use interactive career tools like Career Quiz and Career Explorer to combine your interests, skills, and strengths to discover what future pathways are most intriguing to you

All of this is available to you on the BigFuture School mobile application if you are 13 and older, test in the U.S., and decide to download and authenticate your personalized access to the app. If you share your mobile number with us when you take the test, we'll text you a link to download the app, send you a code you'll use to sign in, and let you know when your scores are ready after you complete the test. No passwords are required and we won't use your phone number for any other reason.

Read more about the BigFuture School mobile application at privacy.collegeboard.org/program-specific-privacy-policies/bigfuture-school-app-privacy-policy.

Get Connected to Colleges, Scholarships, and More

As you think about college planning, you can opt in to Connections, where you can match with nonprofit colleges, scholarship providers, and government agencies running educational programs. You may connect with organizations that are interested in students like you, based on information about you and your preferences. With so many options to discover, Connections keeps your interests in mind so you can decide if and when to contact organizations directly.

Connections is optional. If you choose to download BigFuture School, and/or provide your email and/or address when you take the PSAT/NMSQT, we'll send messages on behalf of organizations via the BigFuture School mobile app, email, and postal mail. If you use the BigFuture School mobile app, you will also see your matched organizations and which ones are interested in you through the Connections features in the app. You also have the choice to opt in or out later in the BigFuture School mobile app.

In Connections, we use the information you and your state, district, or school provide as part of the PSAT/NMSQT, any information you share in BigFuture School, your educational and career interests and preferences shared in BigFuture School, and score ranges on any of your past and future SAT, PSAT/NMSQT, PSAT™ 10, and any AP® Exams.

NOTE: The content from these organizations is not written, edited, or approved by College Board.

What Kinds of Organizations Could I Connect With?

When you opt in to Connections, you will only get content from organizations that meet one of the following criteria:

- Nonprofit accredited colleges and universities (domestic and international) that offer 2-year associate and/or 4-year bachelor's degrees, as well as their licensure and certificate programs
- 501(c)(3) nonprofit scholarship providers
- Government agencies that are responsible for the oversight and administration of educational programs, which are for the purpose of offering no-cost scholarships and/or financial aid or providing information regarding nonprofit higher education

What Kind of Messages and Information Might I Receive?

You may learn about colleges, scholarship opportunities, and preliminary offers of admission, such as:

- Information about nonprofit college or university undergraduate institutions, including their academic degree programs (that lead to associate degrees, bachelor's degrees, certificate, or licensure), admissions processes and free events, no-cost scholarship and financial aid opportunities, or general college information
- Information about no-cost scholarship and financial aid opportunities that fund nonprofit secondary or postsecondary education and/or activities
- Information about accessing higher education, including information about particular types of nonprofit higher education institutions or their academic degree programs
- Preliminary offers of admission to nonprofit higher education institutions

If you receive a message with a preliminary offer of admission, you don't need to submit an application. For these offers:

- Your race and ethnicity will not be used.
- Though some colleges may be test optional, College Board SAT assessment test score ranges may be part of the decision making process for these offers.
- There is no guarantee of admissions, scholarships, or financial aid.
- Any preliminary offers of admission you receive and want to pursue may require you to complete additional steps as defined by the college.
- The college may also require confirmation of information it relied upon in making an offer of admission, such as submitting your final transcript to complete the admissions process.
- After you get the offer, you may share more information directly with the college to consider a comprehensive financial aid package as well as confirm your admission and enrollment.
- Each college is responsible for the decision on preliminary offers of admission.
- College Board is not involved in any of the selection or decision making by any of the colleges.
- If you don't receive an offer, you may still apply using the regular application process.

What Information About Me Will Connections Use?

We will never share your personal information with any organizations as part of Connections. To deliver content relevant to you as part of Connections, we use information your state, district, or school provides us with and information you choose to provide to us. We may provide reports about your use of Connections to these organizations, but none of your personal info will be included.

Information about you that your state, district, or school provides:

- | | |
|--------------------------|--|
| ■ Date of birth | ■ Which College Board test you're taking |
| ■ Where you go to school | ■ When you will test |
| ■ Grade level | |
| ■ Gender | |

Information about you that you provide (optionally) as part of this test and/or in BigFuture School:

- | | |
|---------------------------|----------------------------------|
| ■ Home/mailling address | ■ GPA |
| ■ Email address | ■ Intended college major |
| ■ Race | ■ Level of education aspirations |
| ■ Ethnicity | ■ Parents' level of education |
| ■ First and best language | |

Your educational and career interests and preferences shared by you (optionally) in BigFuture School.

BigFuture School and Connections are Optional

Your participation in BigFuture School and Connections is completely voluntary, and you can opt out at any time.

To opt out of BigFuture School text messages:

- Text **STOP** to any text we send you about BigFuture School.
- Call customer service at 866-756-7346.
- For additional help, text **HELP** to any text we send you about BigFuture School or contact us at cb.org/contact.

You may stop using and delete the BigFuture School mobile application at any time.

To opt out of Connections:

- If you are already in Connections, you will be able to opt out in Bluebook during exam setup.
- There is an opt-out feature within the BigFuture School app.
- You can contact College Board's customer service at 866-756-7346.

You can also control specific communication preferences as you use Connections, including through email/mail/app notification controls within the app, an unsubscribe option within Connections emails, opt-out instructions included in each mailing, and by contacting College Board customer service.

Please know that your school, district, or state may choose to not provide access to Connections for its students or students that test at their schools.

PSAT/NMSQT scores will be available in the BigFuture School mobile app. Please visit psat.org/scores for score release dates.

Read more about BigFuture School and Connections at bigfutureschool.org.

Getting Your Scores

If you provided your mobile number during exam setup, you will receive a text message alerting you when your scores are available to view in the app. In addition, an official student score report called "Your Score Report" is provided for every PSAT/NMSQT test taker. Check with your counselor if you would like to obtain a copy of your score report.

For a full breakdown of your scores, including how to get them, what to do with them, and a case study that shows you a sample score report and walks you through each section, check out [PSAT/NMSQT: Understanding Scores for Students and Families](#).

As always, students age 13 and older may use or create a personal College Board student account (studentscores.collegeboard.org) to view additional insights online.

We send your scores, data derived from your scores, and other information you provide during testing to our cosponsor, National Merit Scholarship Corporation (NMSC), who conducts the National Merit Scholarship Program. Your score report will also include the NMSC Selection Index score, which NMSC uses as an initial screen of entrants to its National Merit Scholarship Program. For further information, see the National Merit Scholarship Program section later in this publication.

Explore Career Options

For students in the U.S., your score report will show Career Insights Snapshot—a list of growing careers in your state that connects you to your math and reading and writing skills based on your SAT Suite performance. Career Insights Snapshot provides career examples, not recommendations, that can stimulate your thinking, broaden your awareness of career options, and encourage deeper career exploration beyond the score report. You can view your Career Insights Snapshot in the BigFuture School mobile app to start your career exploration right on your phone. You can also visit bigfuture.org to discover more careers that interest you.

PRO TIP: After reviewing the career information on your score report, take the free BigFuture Career Quiz in less than 10 minutes to get a list of more potential careers that match your interests. Access the quiz in the BigFuture School mobile app or visit bigfuture.org/careerquiz.

College Board National Recognition Program

If you take the PSAT/NMSQT, PSAT 10, and/or AP® Exams as a sophomore or junior, you may be eligible to claim a National Recognition Program award that can help you stand out on college and scholarship applications. The program offers three award designations:

- **NEW!** School Recognition Award
- First-Generation Recognition Award
- Rural and Small Town Recognition Award

The Program awards academic honors to high-performing students to help them stand out to colleges and celebrate their hard work. Students of all backgrounds from schools nationwide are eligible to claim an award based on their achievement on the PSAT/NMSQT, PSAT 10, and/or AP Exams. Awardees are among the highest achieving students in their communities, including those from lesser-known high schools and, as a result, many colleges are eager to recruit them. Learn more about BigFuture at bigfuture.org/recognition.

Scholarship Programs

College Board partners with a variety of scholarship providers to help connect students like you with valuable funding opportunities for college. These partners often look for students based on factors such as your expected graduation date, geographic location, self-reported GPA, test score ranges, intended college major, and other limited criteria. Some partners offer multiple scholarships, each with their own eligibility requirements and deadlines. To explore these opportunities and for more information on how to apply directly, please visit their individual website(s).

- American Indian Science and Engineering Society (aises.org)
- American Savings Foundation (asfdn.org)
- Asian & Pacific Islander American Scholars (apiascholars.org)
- Boettcher Foundation (boettcherfoundation.org/colorado-scholarships)
- Cobell Scholarship (awarded by Indigenous Education, Inc.) (cobellscholar.org)
- Coca-Cola Scholars Foundation (coca-colascholarsfoundation.org)
- Daniels Fund (danielsfund.org)
- The Ford Family Foundation (tfff.org/scholarship-programs-information)
- The Gates Scholarship (thegatesscholarship.org)
- George Snow Scholarship Fund (scholarship.org)
- Greenhouse Scholars (greenhousescholars.org)
- Hispanic Scholarship Fund (hsf.net)
- Horatio Alger Association (scholars.horatioalger.org)
- Jack Kent Cooke Foundation (jkcf.org)
- Jackie Robinson Foundation (jackierobinson.org)
- Ron Brown Scholar Program (ronbrown.org)
- Sachs Foundation (sachsfoundation.org)
- Southern Scholars Initiative (southernscholarsinitiative.org)
- Sunrise Scholars Foundation (sunrisescholars.org)
- United Negro College Fund (uncf.org)
- Washington State Opportunity Scholarship (waopportunityscholarship.org)

See psat.org/scholarships for more information.

PSAT/NMSQT Testing Rules

Introduction

This is a legal contract between you and College Board.

WARNING: There are serious consequences for not following the rules. You may be dismissed from the test. Your test may not be scored, or your scores may be canceled. You may be banned from taking future College Board tests. Your conduct may be reported to your high school and colleges to which you apply.

NOTE: See Section 9 for how disagreements between you and College Board will be handled.

Section 1.

Taking the PSAT/NMSQT

- The PSAT/NMSQT is a digital test. You will take the PSAT/NMSQT at school, on a testing device, using an app called Bluebook™.
- Your testing device must be one of the following:
 - ◆ Windows laptop,
 - ◆ Mac laptop,
 - ◆ Windows tablet (external keyboard is required with a Windows tablet) or other tablet,
 - ◆ iPad,
 - ◆ Chromebook managed by your school.
 - ◆ In some cases, you may be able to take the PSAT/NMSQT on a desktop computer in a school computer lab.
- You cannot use any other devices to take the PSAT/NMSQT. You **cannot** take the PSAT/NMSQT on a mobile phone.
- Your testing device must have enough charge to last the duration of the exam and setup.
- Make sure your device is running on an approved operating system. See bluebook.collegeboard.org/students/approved-devices for more information.
- Bluebook must be downloaded to your testing device before you can take the PSAT/NMSQT. If your testing device is managed by your school, your school may download Bluebook for you. It is your responsibility to check if your school did so. If you are using your own testing device, you will need to download Bluebook yourself. You can download Bluebook from the College Board website at bluebook.app.collegeboard.org.
- Before test day, use the sign-in ticket provided by your school to sign in to Bluebook. Once you sign in, follow the instructions in the app. Many students will complete these steps during a student readiness check run by their school.
- On test day, your school will direct you to your testing room. In your testing room, you will connect to your school's internet. Your proctor will give you credentials to sign in to Bluebook.
- If you are not testing at a school that you regularly attend, you must bring an acceptable photo ID. See sat.org/id-requirements to learn about acceptable photo IDs.
- You MAY bring the following to the test.
 - ◆ A power cord and/or a portable charger. There is no guarantee that you will have access to an outlet for charging.
 - ◆ An external mouse and mouse pad.
 - ◆ A calculator that meets the requirements located at satsuite.collegeboard.org/psat-nmsqt/whats-on-the-test/math/calculator-use. Before testing, you will be asked to clear all saved formulas on a calculator you bring. There is also a calculator in Bluebook that you can use instead of bringing your own if you wish. Either way, you can use a calculator for the entire Math section.
 - ◆ Pen or pencil for scratch work. This pencil does not have to be a No. 2 pencil. Proctors will give you paper before the test begins.

- Close all applications other than Bluebook before the test begins. You are not allowed to have any other apps open on your testing device during testing. You are not allowed to paste work into Bluebook from another program or application. Certain testing accommodations may allow for exceptions to this rule.
- An internet connection is required to start the test and to submit your answers at the end of the test. You will receive instructions from your proctor on test day if there is an internet outage.
- There are 2 sections of the PSAT/NMSQT. The first section is Reading and Writing, and the second section is Math. Each section of the PSAT/NMSQT has 2 modules (parts). Once you leave a module, you cannot return to it.
- Bluebook has a timer that will count down the minutes and seconds remaining in each module. You can hide the timer until the last 5 minutes of the module.
- You must stay for the full length of the standard time test. You cannot submit your answers before the standard timer runs out.
- Enter all your answers into Bluebook.
- Do not close the lid or cover the screen of your testing device until your answers are submitted. Doing so may prevent your answers from being submitted.
- If your answers were successfully submitted, you will see a confirmation screen. If your testing device is not connected to the internet when the PSAT/NMSQT ends and your answers are not submitted, you have until 11:59 p.m. local time the next day to reconnect to the internet and submit your answers.
- Generally, College Board will score all tests that have been started. If your answers are not complete, you may not receive a score or your scores may only be used for guidance purposes. In this case, scores will be ineligible for use in entry into the National Merit® Scholarship Program.
- Some students may be approved to take the PSAT/NMSQT using a paper test as a testing accommodation. In this case, students will select their answers in the test book. Students must select only 1 answer for each question. If the student selects more than 1 answer, the answer will be marked as wrong. Answers will be entered manually into Bluebook by testing staff or by College Board.

Section 2.

Items You Cannot Bring to the PSAT/NMSQT

You may NOT bring the following items to the PSAT/NMSQT or access them during breaks:

- electronic equipment including phones, smartwatches, fitness trackers, wearable technology, cameras, recording or listening devices, or any other type of electronic or communication device (other than your testing device, approved calculator, and any technology where you have an approved testing accommodation),
- all stylus pens, Apple Pencils, smart pens, and other electronic writing instruments,
- books, reference guides, notes, compasses, protractors, dictionaries, highlighters, or colored pencils,
- papers of any kind (scratch paper will be provided by proctors and collected at the end of the test),
- watches that beep, make a noise, or have an alarm,
- calculators on the prohibited list located at satsuite.collegeboard.org/psat-nmsqt/whats-on-the-test/math/calculator-use,
- detachable privacy screens,
- reference guides, keyboard maps, or other typing instructions,
- headphones, earbuds (wired or wireless), ear plugs, or any in-ear or over-ear audio devices, including those with Bluetooth or noise-canceling capabilities, whether they are powered on or off.
- weapons or firearms.

Please note that some of the items on the above list may be allowed for students with certain testing accommodations.

Section 3.

Behaviors That Are Not Allowed

You are NOT allowed to do or attempt to do the following:

- cheat or otherwise get an unfair advantage on the PSAT/NMSQT,
- copy or record test questions, memorize questions for the purpose of writing them down later, or take a screenshot during the test,
- interfere with or bypass Bluebook security features,
- have any applications running on your testing device other than Bluebook or approved technology,
- access or use any phone or other mobile device during the test or breaks,
- access or use any digital resource(s) or website(s) during the test or breaks, including AI (artificial intelligence) tools such as ChatGPT, Photomath, and similar apps,
- fail to turn in or store away a mobile phone by following your school's process,
- use an answer key or receive information from other people about test questions,
- discuss or share information about test questions with others,
- talk to or otherwise communicate with others during the test,
- allow anyone to see your test questions or answers or attempt to see or copy others' test questions or answers,
- look at notes, electronic devices, textbooks, websites, or any other resources during the test or during breaks,
- have information on your clothing, shoes, or body,
- wear a brimmed cap, the hood on a hooded shirt or jacket, or anything else that prevents testing staff from seeing your eyes and ears during the test (exceptions may be made for students with an accommodation, medical issue, or religious reason),
- share a calculator with another person or use a calculator on any test section other than the Math section,
- leave the testing room after you are finished without being dismissed by staff,
- take a testing device from the testing room or test site during the test or breaks,
- go to a locker at any time during the test or breaks,
- take the test for someone else or have someone else take the test for you,
- provide false information to College Board,
- disturb others during the test,
- engage in unruly, aggressive, or violent behavior,
- fail to follow these rules or directions given by the testing staff.

Section 4.

Score Cancellation

- a. **Score Cancellation and Disciplinary Measures.** If College Board determines that your scores are invalid under Section 4(b) below, or you have committed Misconduct under Section 4(c) below, we may, in our sole discretion, take 1 or more of the following measures ("**Measures**"): deny you entry to a test, dismiss you from the test, not score your test, cancel your scores, prevent you from taking future College Board tests (including the SAT, Advanced Placement® (AP®) and CLEP® Exams), and/or share information with others as described in Section 4(f) below.

CAUTION! THE CONSEQUENCES OF CHEATING ON THE PSAT/NMSQT ARE SEVERE.

- b. Invalid Scores.** We may cancel your scores and/or take any of the other Measures described above if after following the procedures set forth in this section, we determine, in our sole discretion, that there is substantial evidence that your scores are invalid (**“Invalid Scores”**). Examples of evidence of Invalid Scores include, without limitation, unusual answer patterns or other evidence that indicates these rules have been violated. Before canceling your scores under this Invalid Scores section, we will notify you in writing (via email if an email address is provided by you in Bluebook for this test) or through your school. We will then offer you 3 choices: voluntary score cancellation, a retest (if during the testing window and available at the test site), or an opportunity to give us additional information and request a further review by a College Board panel. If you choose a further review by a College Board panel, and it confirms, in its sole discretion, that your scores are invalid, we will offer you 3 choices: voluntary score cancellation, a retest (if during the testing window and available at the test site), or binding arbitration (or small claims court) as described below. If the retest option is available at your test site and you choose this, you may not review scores from the test under review—such scores will be canceled. The process described in this Section 4(b) is called the **“Score Validity Process.”** Additional information about security measures and consequences of violating security policies is located at satsuite.collegeboard.org/sat/test-security-fairness. The binding arbitration (or small claims court) option is available only for tests administered in the United States and U.S. territories.
- c. Misconduct.** If we determine, in our sole discretion, that there is overwhelming evidence that you did not follow these rules (**“Misconduct”**), the Score Validity Process will not be offered to you. Instead, we may cancel your scores and/or take any of the Measures described above. Examples of Misconduct are doing or attempting to do the following: using an answer key, mobile phone, the internet, or an application other than Bluebook; removing the test or answers; disrupting the College Board server or Bluebook through a cyberattack or other activity; duplicating the test or Bluebook; or altering the test, answer keys, or any data after testing was complete. Misconduct may be shown in many ways. For example, Misconduct may be shown through observations during the test or by evidence discovered after the test.
- d. Testing Irregularities.** We may cancel your scores if we determine that any testing irregularity occurred (collectively **“Testing Irregularities”**). Examples of Testing Irregularities include problems with the test, irregular circumstances, or events associated with a test that may affect 1 or more test takers. Examples of this are errors like improper seating, improperly admitting someone to the test, giving an accommodation that is not approved by College Board, defective materials, defective equipment, technical issues like a Bluebook malfunction, testing device malfunction, hardware issues, or an internet outage. These also include evidence of possible preknowledge of the test, and disruptions of the test caused by internet disruptions, natural disasters, weather events, epidemics or pandemics, wars, riots, civil disturbances, or other emergencies. When Testing Irregularities occur, we may cancel an entire administration or individual registrations, decline to score all or part of the test, or cancel scores. We may do this regardless of whether or not you caused the Testing Irregularities, benefited from them, or violated these rules. We may, in our sole discretion, give you the opportunity to take the test again within a reasonable time frame, and without charge. This is the only fix that may be available to you as a result of Testing Irregularities.
- e. Test Taker Reporting Violations or Suspicious Behavior.** You may confidentially report any suspected violation of these rules, or any suspicion concerning the security of any College Board test, by immediately reporting this information to College Board online at forms.collegeboard.org/reportcheating or by emailing us at collegeboardtestsecurity@collegeboard.org.
- f. College Board Sharing Information with Others.** We may share the results of test security investigations (including without limitation those relating to Misconduct and Invalid Scores described above, and other disciplinary-related information), with others outside of College Board. This includes your school, any score recipient, college, higher education institution or agency, scholarship organization, potential score recipient, government agency in the United States or abroad, parents, legal guardians, or law enforcement. College Board may also share such information with others that have a good reason for knowing the information or who may be able to help College Board in its investigation or who may be conducting their own investigation. College Board may answer questions from any institution to which you submitted a score. If you make public any review, investigation, or decision of College Board, College Board may make public any and all details of such matter.

Section 5.

Privacy

- a. Privacy Policies.** College Board recognizes the importance of protecting your privacy. Our privacy policies are located at collegeboard.org/privacy-center (“Privacy Policies”), and also available to you under **Help** on the Bluebook homepage. Privacy Policies are part of these rules. You consent to the collection, use, and disclosure by College Board of your information, including personally identifiable information, described in the Privacy Policies and in these rules. College Board may update its Privacy Policies from time to time, and they are subject to change up to 1 week prior to your test date and any subsequent test dates. You are required to review the Privacy Policies located on the College Board website at collegeboard.org/privacy-center prior to each test administration.

b. Your Testing Device and Activity Data.

Your Testing Device Data: When you download and use Bluebook, College Board will receive certain information about your testing device. This includes things like device type, operating system type and version, applications and processes running on your testing device, Internet Protocol (IP) address, screen size and resolution, number of screens, available memory, storage and disk bytes, disk mount, type and size, battery level, and other device-specific information for the purposes described below.

Activity Data: We also capture and monitor the actions you take in Bluebook, including your responses, where you click, where you put your mouse on the page, how long you spend on each page, ctrl/alt/delete attempts, and how you navigate through Bluebook.

Testing Device Data and Activity Data: Your testing device Data and Activity Data (collectively, “Data”) may be used by College Board to make sure your testing device is compatible with Bluebook, for test security purposes, for test validation and research, and to develop and improve College Board products and services. Data may be disclosed to trusted vendors, but only when they are providing services to College Board, and we may disclose aggregated data (combined data of test takers that does not identify you) and de-identified data (data that does not have information to identify you). Data is not sold or licensed to third parties, including without limitation for their marketing purposes or other commercial purposes. We may share Data with your school, district or state education department related to the PSAT/NMSQT you take on Bluebook, including any misuse of Bluebook. You will also be asked to type specific sentences in Bluebook. Neither Data nor those typed sentences are used for biometric identification.

- c. BigFuture® School.** If you are age 13 or older and take the test within the United States and you decide to download the BigFuture School mobile application and authenticate your identity in BigFuture School, then you may access the following educational services in the BigFuture School mobile application, as described below. We may also provide these educational services through other BigFuture School channels, such as a website portal exclusively for these services.
- ◆ **Score Information.** You may access your score(s) and other score information in BigFuture School. This is separate from a score report your school and/or district may provide to you. Score release dates will be posted online at satsuite.collegeboard.org/psat-nmsqt/scores/release-dates.
 - ◆ **Educational and Career Information from College Board.** We may provide you with educational information and recommendations about college and career options in BigFuture School. This may include, for example, AP Potential™, postsecondary options and opportunities, career pathways, scholarships, College Board National Recognition Program potential eligibility, financial aid and paying for college information, and opportunities to participate in College Board research studies. We may customize this information based on certain demographic information from your school, district, or state, information you provide during testing, your score(s) on this test, and your activities in BigFuture School.

- d. Connections.** Connections™ is a free, voluntary program that connects students with information about nonprofit accredited colleges and universities (domestic and international), nonprofit scholarship providers, and government agencies administering educational programs (“**Eligible Organizations**”). Matches are made with Eligible Organizations that may align with student interests without sharing any of their personal information. If available in your state, district, and/or school, you may choose to opt in to Connections during testing in Bluebook or in the BigFuture School mobile application. You may also be able to do so through other channels.
- ◆ **Information Used to Make Connections.** When you opt in to Connections, we will match you with Eligible Organizations based on the information that you and your school, district, or state provide to us as part of this test, score ranges on any of your past and future SAT, PSAT/NMSQT, PSAT 10, and any AP Exams, your interests and preferences as controlled by you in BigFuture School, information you share in BigFuture School, and demographics and characteristics of students in which Eligible Organizations are interested. College Board will not share any of your personally identifiable information with any Eligible Organizations as part of Connections. We may provide reports and analytics to Eligible Organizations regarding your use of Connections, but only in de-identified and aggregated form.
 - ◆ **Kinds of Information about Eligible Organizations Received.** You may receive information from us about Eligible Organizations to which you’ve been matched, including content about colleges that could be a good fit, information about scholarships you might be eligible for, advice about college access, and preliminary offers of admission. (For preliminary offers of admission: only your SAT score ranges may be used by us; your race and ethnicity will not be used; and there is no guarantee of admissions, scholarships, or financial aid. Any preliminary offers of admission you receive may require you to complete additional steps to enroll and to confirm information about you the college relied upon to make the offer, as determined by the college.)
 - ◆ **How Information about Eligible Organizations is Provided.** You may receive these messages through the BigFuture School mobile application, email, and postal mail (if you choose to download BigFuture School, and/or provide your email and/or address as part of this test or later in BigFuture School, all of which is optional). If you use the BigFuture School mobile app, you will also see your matched Eligible Organizations and which ones are interested in you through the Connections features in the app.
 - ◆ **How to Opt Out.** You can opt out of Connections at any time by an opt-out feature within the BigFuture School mobile application or by contacting College Board customer service at 866-756-7346. You can also control specific communication preferences as you use Connections, including through email/mail/app notification controls within BigFuture School, an unsubscribe option within Connections emails, opt-out instructions included in each mailing, or by contacting College Board customer service at 866-756-7346.

More information about Connections is available at satsuite.org/bigfutureschool.

- e. Educational Reporting.** We send your scores, data from your scores, and other information you provide during testing to your school and district. In addition, this information may be sent to your state for educational, diagnostic, and/or reporting purposes. (Students who test away from the school they regularly attend will have their scores shared with the school they regularly attend, and their scores will not be shared with the school at which they tested. Homeschooled students’ scores won’t be shared with the school that administers the test.)
- f. College Board National Recognition Program.** We use the information that you and your school, district, or state provide to us as part of this test and your score(s) on this test to determine and contact you about your potential eligibility for the College Board National Recognition Program. We may share this information and your eligibility and recognition status with your school and district. The College Board National Recognition Program creates pathways to college for underrepresented students by awarding them academic honors and connecting them with universities across the country. For more information, visit bigfuture.collegeboard.org/communities-events/national-recognition-programs.

- g. National Merit Scholarship Program.** We send your scores, data derived from your scores, certain demographic information from your school, district, or state, test administration information including Testing Irregularity reports, and other information you provide during testing to our cosponsor, National Merit Scholarship Corporation (“Cosponsor” or “NMSC”) for it to consider your eligibility for its National Merit® Scholarship Program in accordance with the *PSAT/NMSQT Student Guide* located on the College Board website at satsuite.collegeboard.org/media/pdf/psat-nmsqt-student-guide.pdf and www.nationalmerit.org. NMSC may in turn share your name, address, and birth date with your high school if you qualify for entrance to the National Merit Scholarship Program.

Section 6. Miscellaneous

- a.** In some instances, scores may be issued for guidance purposes only. In this scenario, the resulting scores cannot be considered for some scholarship competitions. When scores are provided for guidance purposes only, a message will appear below the National Merit Scholarship Corporation (NMSC) Selection Index score on your score report directing you to follow up with your school to learn more about the reason for the “guidance purposes only” report. Students who are otherwise eligible and who are interested in entering the National Merit Scholarship Program should turn to the National Merit Scholarship Program section in the *PSAT/NMSQT Student Guide* located on the College Board website at satsuite.collegeboard.org/media/pdf/psat-nmsqt-student-guide.pdf to learn how to request information about another route of entry to the 2027 competition. College Board will forward all Testing Irregularity reports to NMSC, which reserves the right to make its own independent judgment about a student’s participation in the National Merit Scholarship Program.
- b.** Score Cancellation. Students who do not want their scores reported may request a cancellation by asking staff to submit a student-requested cancellation form on test day. After that, cancellation requests must be made within 5 days of the test day. In some instances, scores may still be shared with schools, states, or districts, but will not be shared with other audiences.
- c.** College Board scores PSAT/NMSQT exams in its sole discretion.
- d.** If you are testing at a school that you do not regularly attend, make sure your regular school downloads Bluebook to your school computer. If you bring your own testing device, you must download Bluebook yourself. College Board will provide public deadlines and guidelines for those not testing at their regular school. Schools have the leeway to decide whether to allow you to test at a school you don’t attend.
- e.** For security purposes, including to protect the security and integrity of our tests, College Board may, in its sole discretion, decline to register you or administer a College Board test to you, prevent you from proceeding with a test, or dismiss you from a test.
- f.** If College Board determines that you may be in danger, we may contact your parents, your guardians, your high school, law enforcement, and others. We may share information about you, including your personal information, with those we contact.
- g.** For security purposes, College Board (or someone who works for College Board) may collect recordings like images, video, or audio of you at your test site. Recordings are retained as long as reasonably necessary. College Board may disclose these recordings to law enforcement and/or as reasonably necessary to protect the rights and property of College Board or others.
- h.** Your PSAT/NMSQT may include questions that do not count toward your score. These questions may show up in any of the test sections. They are being pretested for future PSAT/NMSQT administrations. Testing time for the PSAT/NMSQT takes these questions into account.
- i.** After the PSAT/NMSQT, you may be asked to participate in a survey. Participation is totally up to you and will not affect your scores.

- j. College Board takes steps to make sure registration records, answers, and scores are properly managed. In the unlikely event of a problem, College Board will correct the error, if feasible. You may have to retest. College Board has sole discretion in deciding whether to score lost or corrupted answers that are eventually recovered.
- k. Personal property that you bring to the testing site, such as purses, bags, and backpacks, may be searched. College Board may use tools that detect prohibited devices. College Board and testing staff may take personal property that could be used in violation of these rules. College Board will hold this property for a reasonable amount of time for investigation.
- l. College Board is not responsible for any personal property.
- m. You should take the PSAT/NMSQT only 1 time during the testing window. In the event of a Testing Irregularity as described above, you are permitted up to 2 retests. If a retest is not available, students who are otherwise eligible and who are interested in entering the National Merit Scholarship Program should turn to the National Merit Scholarship Program section in this guide to learn how to request information about another route of entry to the 2027 competition.
- n. Your school has sole discretion on when the test will be administered during the testing window and has the right to change the test date in its sole discretion.
- o. College Board is not responsible if you don't follow directions, steps, instructions, or these rules relating to taking the PSAT/NMSQT. You may be prevented from taking the test or finishing the test. You may also be prevented from taking other College Board assessments in the future. These decisions are in the sole discretion of College Board.
- p. You may submit a report to College Board if you think there is an error or something is unclear in a test question. If so, College Board may need to hold your PSAT/NMSQT score for this review. Your score may not be available by the published release date for your test.

Section 7.

Policies and Requirements

- a. All College Board policies and requirements described in these rules, as well as those located at satsuite.collegeboard.org/psat-nmsqt, and linked information therein, are part of these rules.
- b. College Board may update its policies and requirements from time to time. These updates may relate to the types of testing devices that you can use for the PSAT/NMSQT. These policies can be changed up to 1 week prior to your test date. You must review these prior to each test.

Section 8.

Intellectual Property - Ownership of Materials

- a. All content contained within the PSAT/NMSQT, practice PSAT/NMSQT tests, the Student Question Bank, the Educator Question Bank, Bluebook, BigFuture School, College Board's websites (CollegeBoard.org), and all software, processes, algorithms, and other technologies used in connection with these (called "**CB Property**") belong only to College Board and its licensors. You have no rights in or to CB Property other than a personal license to use CB Property for its intended purposes and subject to its terms.
- b. Attempting to copy, download, decompile, or reverse engineer any CB Property is strictly prohibited. Taking pictures or screenshots of the PSAT/NMSQT is strictly prohibited.
- c. Test answers and other testing materials you submit to College Board are owned by College Board. You have an independent right to your test scores, including the right to access, retain, and use your scores, except as otherwise described in these rules.

Section 9.

ARBITRATION OF DISPUTES AND CLASS ACTION WAIVER

- a. General Arbitration Rules ("**General Arbitration Rules**")

All disputes between you and College Board (each a "party") and/or any or all of its contractors or Cosponsor that relate in any way to registering for, participating in, or taking the PSAT/NMSQT, including but not limited to requesting or receiving test accommodations, score reporting, the use of your data, test security issues, or the Score Validity Process (defined in the "Invalid Scores" section herein), will exclusively be resolved in binding arbitration or small claims court. By agreeing to arbitration in accordance with this section, you are waiving your right to have your dispute heard by a judge or jury except as set forth

below. Disputes relating to the Score Validity Process are subject to both these General Arbitration Rules and the Supplemental Arbitration Rules defined in Section 9(b) below. If there is a conflict between the General Arbitration Rules and the Supplemental Arbitration Rules, the Supplemental Arbitration Rules will control.

Either party can seek to have a claim resolved in small claims court if the rules of that court will allow it. Additionally, if the claims asserted in any request or demand for arbitration could have been brought in small claims court, then either you or College Board may elect to have the claims heard in small claims court, rather than in arbitration, at any time before an arbitrator is appointed, by notifying the other party of that election in writing. Any dispute about whether a claim qualifies for small claims court will be resolved by that court and not by an arbitrator. In the event that either party elects to have their claims heard in small claims court, the arbitration proceeding will remain closed unless and until there is a decision by the small claims court that the claim should proceed in arbitration.

All claims that are not decided in small claims court must be resolved through binding, individual arbitration before a single arbitrator. The arbitration will be administered by the American Arbitration Association (“AAA”) under the AAA Consumer Arbitration Rules, supplemented by the AAA Mass Arbitration Supplementary Rules as applicable, in effect at the time a request for arbitration is filed with the AAA. Copies of the AAA Consumer Arbitration Rules and the AAA Mass Arbitration Supplementary Rules are located at adr.org. The arbitrator will have the authority to resolve any dispute regarding the scope or enforceability of these Rules, except only a court can decide claims that a party violated the intellectual property rights of the other party. In addition, only a court can decide issues relating to (a) the pre-arbitration requirements contained in these Rules or (b) the interpretation of the prohibition of class and representative actions contained in these Rules.

Before commencing a small claims court or arbitration proceeding, that party (the “complainant”) must provide the other party (the “respondent”) with a written notice of dispute that includes the complainant’s name and contact information, a detailed description of the dispute, relevant documents, the specific relief sought, and the complainant’s physical signature (signature by counsel to the party is not sufficient). For purposes of clarity and as stated above, this includes disputes relating to the Score Validity Process set forth below in Subsection 9(b). If you are the complainant, send the notice of dispute by first class mail, FedEx, or UPS. Prior to September 2025, please address to Legal Department, 250 Vesey Street, New York, NY, 10281. After September 2025, please address to Legal Department, 225 Liberty Street, New York, NY, 10281. Alternatively, you (or your counsel) can send the notice of dispute to legalhelp@collegeboard.org. A member of College Board’s Legal Department will then contact you (or your counsel) to attempt to resolve the dispute through informal good faith negotiations as described below. College Board will send its notice of dispute to your address as reflected in College Board’s records.

Also, before the complainant may commence a small claims court or arbitration proceeding, the parties must attempt to resolve the dispute through informal, good-faith negotiation. If the parties have not resolved the dispute within sixty (60) days of the respondent’s receipt of the written notice of dispute, the parties will mutually schedule a settlement conference which must occur within fourteen (14) days of the completion of the sixty (60) day period, unless otherwise mutually agreed by the parties. Each party must personally appear at the settlement conference (if a party is represented by counsel, their counsel may also participate), and appearances may be made telephonically or by video. If the parties are unable to resolve the dispute at the settlement conference, either party may commence arbitration or file a small claims court proceeding. The statute of limitations and any filing fee deadlines will be tolled while the parties engage in this informal dispute resolution process. If any aspect of the requirements in this Subsection 9(a) has not been met, a court can enjoin the filing or prosecution of an arbitration or the assessment of any arbitration fees. In addition, unless prohibited by law, the AAA cannot accept or administer an arbitration, nor assess any fees for an arbitration, that has not met the requirements of this Subsection 9(a). If the arbitration is already pending, it must be dismissed.

If the dispute proceeds to arbitration, the complainant must personally attend all arbitration conferences, hearings, and mediations scheduled by the AAA or by an arbitrator or mediator appointed by the AAA. If the complainant is represented by counsel, the complainant's counsel may also participate, and all participation may be made telephonically or by video except as directed by the arbitrator or mediator. If a complainant fails to personally appear at any conference, hearing, or mediation scheduled by the AAA or by an AAA arbitrator or mediator, regardless of whether the complainant's counsel attends, the arbitrator will administratively close the arbitration proceeding without prejudice, unless the complainant shows good cause as to why the complainant was not able to attend the conference, hearing, or mediation.

This arbitration will be conducted as a documents-only arbitration (i.e., there will be no in-person or telephonic hearing) unless otherwise agreed by the parties or required by the arbitrator. If the parties agree to or the arbitrator requires proceedings, such proceedings should be conducted at a location that is reasonably convenient to both parties with due consideration of their ability to travel and other pertinent circumstances. If the parties are unable to agree on a location, the parties agree that the proceedings will be conducted via a video or telephonic call or, in the event that face-to-face proceedings are agreed to by the parties or required by the arbitrator, at a location that is reasonably convenient to both parties in accordance with the AAA Consumer Arbitration Rules. The arbitrator may consider rulings in arbitrations involving other individuals, but an arbitrator's rulings will not be binding in proceedings involving different individuals. The existence and content of the arbitration proceedings, including documents and briefs submitted by the parties; any correspondence from the AAA; and correspondence, orders, and awards issued by the arbitrator, will remain strictly confidential and will not be disclosed to any third party without the express written consent from the other party, unless disclosure to the third party is reasonably required in the context of conducting the arbitration proceedings or related court proceedings.

For disputes meeting the definition of "Mass Arbitration" under the AAA Mass Arbitration Supplementary Rules, the parties agree that the dispute is subject to the AAA's Mass Arbitration Supplementary Rules and the parties agree to the appointment of a Process Arbitrator, except as may otherwise be decided by the arbitrator or the AAA.

The parties agree that the Federal Arbitration Act ("**FAA**") 9 U.S.C. § 1 *et seq.* governs this section, and it is the intent of the parties that the FAA will preempt all State laws to the fullest extent permitted by law.

No arbitration may be maintained as a class or collective action; a party may bring a claim only on their own behalf and cannot seek a relief that would affect other individuals. Unless all parties agree otherwise, the arbitrator will not have the authority to consolidate the claims of more than 1 individual, conduct any class or collective proceeding, make any class or collective award, or make an award to any person or entity not a party to the arbitration, without the express written consent of College Board.

Payment of all filing, administrative, and arbitrator fees and costs will be governed by the AAA's rules. If the arbitrator finds that either the substance of your claim or the relief sought was frivolous or was brought for an improper purpose (as measured by the standards set forth in Federal Rule of Civil Procedure 11(b)), then College Board may seek applicable fee-shifting.

b. Supplemental Arbitration Rules for the Score Validity Process
 ("**Supplemental Arbitration Rules**")

If you receive a notice from College Board that your scores are subject to the Score Validity Process, you may be provided with the option to choose arbitration. In addition to the General Arbitration Rules, except as set forth herein, the below rules will apply.

The sole issue for the arbitrator to decide is whether College Board acted in good faith and followed the Score Validity Process.

This arbitration will be based only on (i) the documents you submitted to College Board pursuant to the Score Validity Process and (ii) College Board documents unless otherwise agreed by the parties or required by the arbitrator.

If the arbitrator finds that College Board did not act in good faith in deciding to cancel your scores, your scores will not be canceled (or they will be reinstated, if applicable).

All other disputes with College Board will be resolved solely by the General Arbitration Rules in Subsection 9(a) above, except as set forth herein.

Section 10.

Venue and Waiver of Jury Trial

All disputes (disagreements) arising from or related to these rules that are not resolved under Section 9 shall be resolved only in the state and federal courts located in New York County, New York State, and each party to these rules irrevocably consents to the jurisdiction of such courts. Each party expressly waives any right to a jury trial in any lawsuit arising from or related to these rules.

Section 11.

LIMITATIONS OF LIABILITY

EXCEPT TO THE EXTENT FINALLY DETERMINED TO BE PROHIBITED BY LAW, THE TOTAL LIABILITY OF COLLEGE BOARD AND ITS COSPONSOR TO YOU OR ANYONE CLAIMING BY OR THROUGH YOU OR ON YOUR BEHALF, FOR ANY CLAIMS, LOSSES, COSTS, OR DAMAGES ARISING OUT OF OR RESULTING FROM OR IN ANY WAY RELATED TO COLLEGE BOARD, OR ANY TEST ADMINISTRATION BY COLLEGE BOARD, FROM ANY CAUSE, SHALL NOT EXCEED THE TEST REGISTRATION FEES YOU PAID TO COLLEGE BOARD (IF APPLICABLE) OR \$100.00, WHICHEVER IS GREATER. IN ADDITION, COLLEGE BOARD AND ITS COSPONSOR WILL NOT BE LIABLE IN ANY EVENT FOR ANY CONSEQUENTIAL, INDIRECT, PUNITIVE, EXEMPLARY, OR SPECIAL DAMAGES.

Section 12.

Disclaimer of Warranties

COLLEGE BOARD MAKES NO WARRANTIES REGARDING THE PSAT/NMSQT, PSAT/NMSQT CONTENT, OR THE APPLICATION INCLUDING WITHOUT LIMITATION A WARRANTY THAT THE TESTING EXPERIENCE WILL BE UNINTERRUPTED OR ERROR FREE. YOU ACCEPT THE PSAT/NMSQT, PSAT/NMSQT CONTENT, AND TESTING APPLICATION AS IS.

Section 13.

Severability

If any provision or part of these rules is held to be invalid, illegal, or unenforceable, the remaining provisions will nevertheless continue in full force without being impaired or invalidated in any way, and, to the extent possible, the invalid, illegal, or unenforceable provision shall be modified so that it is valid, legal, and enforceable and, to the fullest extent, reflects the intention of the parties.

Section 14.

Restricted Registrations

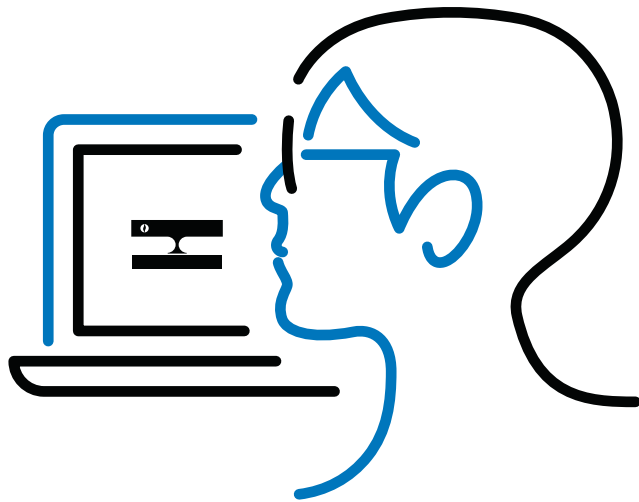
College Board, along with our service providers overseas, is subject to U.S. economic sanctions, laws, and regulations and is prohibited from providing testing services to, or accepting registrations from, persons residing in certain areas or designated by the U.S. government as Specially Designated Nationals and Blocked Persons (collectively, “**Sanctioned Persons**”), unless specifically licensed or otherwise authorized by the U.S. government. You consent to use of your personally identifiable information by College Board to verify whether you are a Sanctioned Person. If a Sanctioned Person attempts to register despite U.S. sanctions that prohibit College Board from doing business with such Sanctioned Person, College Board or a U.S. financial institution may block the registration or payments submitted by or for such Sanctioned Persons. If payment is not blocked, College Board is required to cancel the registration and may not be able to refund the payment. Please contact PSAT/NMSQT customer service at 866-433-7728 (+1-212-713-8105 internationally) or the website of the U.S. Treasury Department’s Office of Foreign Assets Control (OFAC) to obtain the current list of sanctioned programs and Sanctioned Persons.

Section 15.

Accessibility of These Rules

If you have difficulty accessing these rules, including our policies and requirements, please contact College Board customer service at 866-433-7728 (+1-212-713-8105 internationally) or satsuite.collegeboard.org/contact-us in advance of registering for or taking the PSAT/NMSQT. We will be happy to provide these rules in an alternative format or assist you in some other manner as reasonably necessary to enable you to access these rules.

National Merit Scholarship Program



The National Merit Scholarship Corporation (NMSC) section of this publication provides details on the National Merit Scholarship Program, conducted by NMSC. This section is not created or managed by College Board. College Board is not involved in any of the decision making for the National Merit Scholarship Program.

National Merit® Scholarship Program conducted by National Merit Scholarship Corporation (NMSC®)

Overview

The **National Merit Scholarship Program** is an annual academic competition among high school students for recognition and college scholarships that began in 1955. The program is conducted by National Merit Scholarship Corporation (NMSC®), a not-for-profit organization that operates without government assistance. United States high school students enter the National Merit Scholarship Program by taking the Preliminary SAT/National Merit® Scholarship Qualifying Test (PSAT/NMSQT®), which serves as an initial screen of over 1.3 million entrants each year, and by meeting published program entry and participation requirements.

To enter the National Merit Scholarship Program and compete for recognition and 7,590 scholarships to be offered in 2027:

- Take the PSAT/NMSQT in October 2025.
- Meet other program entry requirements.

The 2025 PSAT/NMSQT is the qualifying test for entry to the 2027 program. Program entrants must take the test in the specified year of the high school program (see When to Take the Test on page 36). Most entrants will complete high school and enroll in college in 2027.

Contents in this section:

34 Steps in the 2027 National Merit Scholarship Competition

35 Entry Requirements

36 When to Take the Test

37 Eligibility Verification

38 Program Recognition

38 NMSC Selection Index

38 Commended Students

38 Semifinalists

39 Finalists

39 Choosing Scholarship Winners

40 Types of Scholarships

40 National Merit \$2500 Scholarships

41 Corporate-sponsored Scholarships

41 College-sponsored Merit Scholarships

42 Scholarship Sponsors

42 Corporations, Business Organizations, and Individual Donors

50 Colleges and Universities

Have questions?

WEBSITE: www.nationalmerit.org

PHONE: 847-866-5100

ADDRESS: National Merit Scholarship Corporation
 1560 Sherman Avenue, Suite 200
 Evanston, IL 60201-4897

Steps in the 2027 National Merit Scholarship Competition

1,300,000 ENTRANTS

In October 2025, U.S. high school students who take the Preliminary SAT/National Merit Scholarship Qualifying Test (PSAT/NMSQT®) and meet other program requirements will enter the 2027 competition for National Merit® Scholarship Program recognition and scholarships. Nearly all program participants (entrants) will be juniors planning to enter college in 2027. NMSC® uses NMSC Selection Index scores (calculated from the Reading and Writing, and Math section scores) to determine 50,000 high-scoring participants who qualify for program recognition.



50,000 HIGH SCORERS

In April 2026, NMSC will send a list of high-scoring participants to high school principals and ask them to identify any errors or changes in the reported eligibility of students whose scores will qualify them for recognition in the fall of 2026.



PARTICIPANTS WHO QUALIFY FOR NATIONAL MERIT PROGRAM RECOGNITION



34,000 COMMENDED STUDENTS

In late September 2026, more than two-thirds of the 50,000 high scorers will be notified through their high schools that they have qualified as Commended Students. NMSC will provide *Letters of Commendation* for schools to present to these students in recognition of their outstanding academic promise. Although Commended Students will not continue in the competition for National Merit Scholarships, some may be candidates for Special Scholarships provided by corporate and business sponsors (see below).



16,000 SEMIFINALISTS

In early September 2026, about one-third of the 50,000 high scorers will be notified that they have qualified as Semifinalists—the highest-scoring entrants in each state. NMSC will notify them through their schools and provide scholarship application materials explaining requirements to advance in the competition for National Merit Scholarships to be offered in 2027.



15,000 FINALISTS

In February 2027, Semifinalists who meet academic and other requirements will be notified that they have advanced to Finalist standing and will receive *Certificates of Merit* attesting to their recognition in the program. All National Merit Scholarship winners (Merit Scholar® awardees) will be chosen from this group of Finalists based on their abilities, skills, and accomplishments.



SCHOLARSHIP WINNERS



660 SPECIAL SCHOLARSHIP RECIPIENTS

Beginning in March 2027, NMSC will notify winners of Special Scholarships provided by corporate sponsors. Scholarship recipients will be chosen from candidates who will be sent scholarship application materials through their high schools in November 2026. Although not Finalists, scholarship recipients will be outstanding students who meet their sponsors' eligibility criteria. Sponsors will handle public announcement of their Special Scholarship winners.



6,930 MERIT SCHOLARSHIP WINNERS

Beginning in March 2027, NMSC will notify winners of the three types of National Merit Scholarships:

- National Merit® \$2500 Scholarships
- Corporate-sponsored scholarships
- College-sponsored scholarships

In April, May, June, and July, NMSC will release names of Merit Scholar designees to news media for public announcement.

The 2027 Competition Begins in 2025

The 2025 Preliminary SAT/National Merit Scholarship Qualifying Test (PSAT/NMSQT®) is the qualifying test for entry to the 2027 National Merit® Program. (The PSAT™10 and PSAT™8/9 will NOT be considered for entry to the National Merit Scholarship Program.) The competition will span about 18 months from entry in the fall of 2025 until the spring of 2027 when scholarships for college undergraduate study will be awarded. It is expected that more than 3 million students will take the PSAT/NMSQT in 2025, and approximately 1.3 million of them will meet requirements to enter this program.

Entry Requirements

To enter the 2027 National Merit Program, you need to meet **all** of the following requirements. You must:

1. be enrolled as a high school student (traditional or homeschooled), progressing normally toward graduation or completion of high school by 2027, and planning to accept admission to college no later than the fall of 2027;
2. attend high school in the United States, District of Columbia, or U.S. commonwealths and territories; or meet the citizenship requirements for students attending high school outside the United States (see the box at the bottom of the page); and
3. take the 2025 PSAT/NMSQT in the specified year of the high school program and no later than the third year in grades 9 through 12, regardless of grade classification or educational pattern (explained in When to Take the Test on page 36).

During the student readiness check, you will be asked the following three questions to determine entry to the National Merit Scholarship Program:

1. Are you enrolled as a high school student (traditional or homeschooled)?
A. Yes B. No
2. When will you complete or leave high school and enroll full-time in college?
A. 2026 C. 2028 E. Not planning to
B. 2027 D. After 2028 attend college
3. How many total years will you spend in grades 9–12?
A. 1 year C. 3 years E. 5 or more years
B. 2 years D. 4 years

If you are testing outside the United States, you will also be asked the following question:

4. Are you a citizen of the United States?
A. Yes B. No
C. No, but I am a U.S. lawful permanent resident (or have applied for permanent residence, the application for which has not been denied) and I intend to become a U.S. citizen at the earliest opportunity allowed by law.

Students Attending High School Outside the United States

To be eligible for the 2027 National Merit Scholarship Program, a student attending high school outside the United States must be a citizen of the United States; or be a U.S. lawful permanent resident (or have applied for permanent residence, the application for which has not been denied) and intend to become a U.S. citizen at the earliest opportunity allowed by law.

When to Take the Test

To participate in the National Merit Program, you must take the PSAT/NMSQT in the specified year of your high school program. Because you can participate (and be considered for a scholarship) in only one specific competition year, the year in which you take the PSAT/NMSQT to enter the competition is very important.

1. If you plan to spend the usual four years in high school (grades 9 through 12) before entering college full-time, you must take the qualifying test in your third year of high school (grade 11, junior year).

Sophomores who take the 2025 PSAT/NMSQT but plan to spend four years in grades 9 through 12 will **not** meet entry requirements for the 2027 National Merit Program. They must take the PSAT/NMSQT again in 2026 (when they are juniors) to enter the competition that will end when scholarships are awarded in 2028, the year they will complete high school and enter college.

2. If you plan to leave high school early to enroll in college full-time after spending three years or less in grades 9 through 12, you can usually participate in the National Merit Program if you take the PSAT/NMSQT before you finish high school. To enter the competition for awards offered in 2027, you must be in either the **next-to-last** or the **last year** of high school when you take the 2025 PSAT/NMSQT:
 - a. if you are in the **next-to-last year** of high school when you take the 2025 PSAT/NMSQT, awards will be offered as you are finishing your last year of high school; or
 - b. if you are in your **last year** of high school when you take the 2025 PSAT/NMSQT, awards will be offered the year after you have completed high school.
3. If you are dual enrolled in both high school and college, you must take the qualifying test in your third year of high school (grade 11, junior year). To enter the competition that ends when scholarships are offered in 2027, you must be in your third year of high school when you take the 2025 PSAT/NMSQT, the same as all other students who plan to spend four years in grades 9 through 12. Your high school determines whether you are dual enrolled.
4. If you plan to take five years to complete grades 9 through 12, you can participate in the National Merit Program if you take the PSAT/NMSQT in the third year of high school and again in the fourth year. Your Selection Index score will not be eligible for the program until a written request for entry to the competition is approved by NMSC. The request should include your name, high school name and location, year you began high school, year you will complete high school, and a brief explanation of your educational pattern.

NMSC will use your Selection Index score from the PSAT/NMSQT taken in your third year of grades 9 through 12 to determine the expected level of recognition. In order to be recognized in your fifth (final) year of high school, you must take the PSAT/NMSQT again in your fourth year and earn a qualifying Selection Index score at or above the level achieved on your third year test. The level of recognition you receive cannot exceed the level earned on the qualifying test taken during your third year in grades 9 through 12, the year in which all other competitors are considered.

NOTE: If your high school standing and enrollment do not fit one of the preceding descriptions or if you have any questions about when to take the PSAT/NMSQT for National Merit Program entry, contact NMSC immediately.

Unable to Take the PSAT/NMSQT?

If you do not take the 2025 PSAT/NMSQT because of illness, an emergency, or other extenuating circumstance, you may still be able to enter the 2027 National Merit Scholarship Program.

If the PSAT/NMSQT testing window has not yet closed, see Special Considerations on page 4. You may be able to take the PSAT/NMSQT on another date or at another high school.

If the PSAT/NMSQT testing window has closed, write to NMSC as soon as possible but no later than April 1, 2026, to request another route of entry to the 2027 National Merit Scholarship Program.

The alternate entry request should include your name and home address, the contact information of the person making the request, the name and address of your high school, and a brief explanation of why you were unable to take the PSAT/NMSQT. **Do not delay**; the earlier you write, the more options you will have for scheduling test dates.

Submit your request via email to ae@nmerit.net or by mail to:

National Merit Scholarship Corporation
Attn: Scholarship Administration
1560 Sherman Avenue, Suite 200
Evanston, IL 60201-4897

Your request must be received or postmarked on or before April 1, 2026, for your request to be considered.

Removing Your Score from NMSC Consideration

If you felt your test performance was negatively affected for any reason and you do not want your 2025 NMSC Selection Index score used for participation in the 2027 National Merit Program, you must contact NMSC **immediately**, but no later than five days following the test administration, to submit a formal request. Requests received after five days will not be considered.

Eligibility Verification

The NMSC section of the PSAT/NMSQT Score Report shows your responses to the entry requirements questions and whether your Selection Index score will be considered for the National Merit Scholarship Program. You are encouraged to review this section of your score report carefully.

If your score report indicates that you do not meet entry requirements for the 2027 National Merit Scholarship Program, you may have missing or incorrect responses to the entry requirements questions that were asked during exam setup. If that is the case, you may update your responses with NMSC using the online form at www.nationalmerit.org/studentupdate.

If your name, high school enrollment, or other information is inaccurate on your PSAT/NMSQT Score Report, please contact NMSC immediately.

All requests to update records for the 2027 National Merit Scholarship Program must be submitted no later than October 15, 2026.

Program Recognition

NMSC Selection Index

The NMSC Selection Index score, shown on a student's score report, is calculated using a student's section scores from the PSAT/NMSQT and the following formula:

$$\frac{2RW + M}{10} = \text{Selection Index score}$$

NMSC uses NMSC Selection Index scores as an initial screen of some 1.3 million program entrants. The 2025 Selection Index scores of all students who meet entry requirements for the 2027 program will be considered. In the spring of 2026, NMSC will ask high school principals to identify any errors or changes in the reported eligibility of their high scorers (students whose Selection Index scores will qualify them for recognition in the fall of 2026).

Commended Students

In September 2026, more than two-thirds (about 34,000) of the high scorers will be designated Commended Students. They will be named on the basis of a nationally applied Selection Index qualifying score that may vary from year to year.

In recognition of their outstanding ability and potential for academic success in college, NMSC will honor these students by sending *Letters of Commendation* to them through their high schools. Although Commended Students will not continue in the competition for National Merit Scholarships, some may be candidates for Special Scholarships offered by corporate sponsors (see Corporate-sponsored Scholarships on page 41). NMSC will notify those candidates in November 2026.

Semifinalists

More than 16,000 of the high scorers, representing less than 1% of the nation's high school graduating seniors, will qualify as Semifinalists. Only Semifinalists will have an opportunity to advance in the competition for Merit Scholarship® awards. NMSC will notify Semifinalists of their standing and send scholarship application materials to them through their high schools in September 2026. Their names will be sent to regionally accredited four-year U.S. colleges and universities and released to local news media for public announcement in mid-September.

NMSC designates Semifinalists in the program on a state-representational basis to ensure that academically accomplished young people from all parts of the United States are included in this talent pool. Using the latest data available, an allocation of Semifinalists is determined for each state, based on the state's percentage of the national total of high school graduating seniors. For example, the number of Semifinalists in a state that enrolls approximately 2% of the nation's graduating seniors would be about 320 (2% of the 16,000 Semifinalists).

NMSC then arranges the Selection Index scores of all National Merit Program participants within a state in descending order. The score at which a state's allocation is most closely filled becomes the Semifinalist qualifying score. Entrants with a Selection Index score at or above the qualifying score are named Semifinalists. As a result of this process, Semifinalist qualifying scores vary from state to state and from year to year, but the scores of all Semifinalists are extremely high.

In addition to Semifinalists designated in each of the 50 states and without affecting the allocation to any state, Semifinalists are named in several other selection units that NMSC establishes for the competition. These units are for students attending schools in the District of Columbia, schools in U.S. commonwealths and territories, schools in other countries that enroll U.S. citizens, and U.S. boarding schools that enroll a sizable proportion of their students from outside the state in which the school is located. A participant can be considered for Semifinalist standing in only one state or selection unit, based on the high school in which the student is regularly enrolled when taking the PSAT/NMSQT.

Finalists

A Semifinalist must fulfill several additional requirements and advance to the Finalist level of the competition before being considered for a National Merit Scholarship. About 95% (over 15,000) of the Semifinalists are expected to become Finalists and receive a *Certificate of Merit* attesting to their distinguished performance in the competition.

To qualify as a Finalist, a Semifinalist must:

1. continue to meet all program entry requirements (explained in Entry Requirements on page 35);
2. be enrolled in the last year of high school and planning to enroll full-time in college the following fall, or be enrolled in the first year of college if grades 9 through 12 were completed in three years or less;
3. be fully endorsed for Finalist standing and recommended for a National Merit Scholarship by the high school principal;
4. have a record of consistently very high academic performance in all of grades 9 through 12 and in any college course work taken (the high school must provide a complete record of courses taken and grades earned by the student, as well as information about the school's curriculum and grading system);
5. complete the National Merit Scholarship Application with all information requested, which includes writing an essay;
6. take the SAT® or ACT® and earn scores that confirm the PSAT/NMSQT performance that resulted in Semifinalist standing; and
7. provide any additional documentation and information that NMSC requests.

Choosing Scholarship Winners

Only Finalists will be considered for the National Merit Scholarships. Approximately half of the Finalists will be Merit Scholarship winners, earning them recognition as a Merit Scholar. Winners are chosen on the basis of their abilities, skills, and accomplishments—without regard to gender, race, ethnic origin, or religious preference. Scholarship recipients are the candidates judged to have the greatest potential for success in rigorous college studies and beyond.

To receive a scholarship payment, a Merit Scholarship winner must notify NMSC of plans to (a) enroll in a college or university in the United States that holds accredited status with a regional accrediting commission on higher education, and (b) enroll full-time in an undergraduate course of study leading to a traditional baccalaureate degree. NMSC scholarship stipends are not payable for attendance at service academies or certain institutions that are limited in their purposes or training.

To select winners of National Merit \$2500 Scholarships and corporate-sponsored awards, committees of experienced professionals evaluate a variety of information submitted by the high school and the student on the scholarship application. Included are each student's academic record (course load, difficulty level, depth and breadth of subjects studied, and grades earned); the student's essay; demonstrated leadership and contributions to school and community activities; and the school official's recommendation. Recipients of college-sponsored Merit Scholarship awards are chosen by officials of the sponsor institution. College officials base their decisions on information Finalists file with the college as part of the admission process.

Types of Scholarships

Some 6,930 National Merit Scholarships of three types and approximately 660 Special Scholarships will be awarded in 2027; these 7,590 awards will have a combined value of over \$33 million. Different types of scholarships will be offered, but no student can receive more than one monetary award from NMSC.

National Merit \$2500 Scholarships

These awards are unique because every Finalist is considered for one and winners are named in every state and other selection unit. The number awarded in each state is determined by the same representational procedure used to designate Semifinalists. Finalists compete with all other Finalists in their state or selection unit for one of the 2,500 National Merit® \$2500 Scholarships. Winners are selected by a committee of college admission officers and high school counselors.

National Merit \$2500 Scholarships provide a single payment of \$2,500. NMSC's own funds support the majority of these scholarships, but corporate sponsors help underwrite these awards with grants they provide to NMSC in lieu of paying administrative fees. Donations made to NMSC's President's Fund also provide funding for National Merit \$2500 Scholarship awards.

SCHOLARSHIPS OFFERED

	Who is considered?	What is the monetary value?	Who selects winners?	When does NMSC begin sending scholarship offers?
National Merit® \$2500 Scholarships	All Finalists compete with all other Finalists in their state or other selection unit.	Awards provide a one-time payment of \$2,500.	A committee of college admission officers and high school counselors	Late March
Corporate-sponsored Merit Scholarships	Finalists who meet criteria specified by a corporate sponsor, usually: <ul style="list-style-type: none"> ▪ children of employees; ▪ residents of specific communities; or ▪ Finalists with certain college major or career plans 	Varies by sponsor—awards can be a one-time payment ranging from \$2,500 to \$10,000 or renewable awards that range from \$1,000 to \$10,000 per year.	NMSC's professional staff	Early March
Corporate-sponsored Special Scholarships	High-performing program participants (although not Finalists) who meet a sponsor's criteria; most are for: <ul style="list-style-type: none"> ▪ children of employees; or ▪ residents of specific communities 	Varies by sponsor—awards can be a one-time payment ranging from \$2,500 to \$10,000 or renewable awards that range from \$1,000 to \$10,000 per year.	NMSC's professional staff	Early March
College-sponsored Merit Scholarships	Finalists who plan to attend a sponsor college and have informed NMSC that the sponsor college is their first choice	Varies by sponsor—awards are renewable for four years of study at the sponsor institution. Stipends range from \$500 to \$2,000 per year.	Officials of each sponsor college	Early May

Corporate-sponsored Scholarships

In 2025, about 150 corporations, company foundations, and businesses sponsored scholarships through the National Merit Program as part of their educational philanthropy. These sponsors committed nearly \$13 million to support approximately 830 corporate-sponsored Merit Scholarship awards and 660 Special Scholarships for children of employees, or for other accomplished students who meet the sponsor's criteria.

The number of **National Merit** Scholarships a company or business offers annually may range from one to more than 100. Finalists who meet a sponsor's criteria are identified from information Semifinalists supply on their scholarship applications. Winners are selected from this pool based on their abilities, skills, and accomplishments. The scholarship name usually identifies the grantor—for example, National Merit XYZ Company Scholarship.

Over two-thirds of the program's corporate sponsors also provide **Special** Scholarships. Organizations that sponsor Special Scholarships make Entry Forms available to employees or members to enter eligible students in the corporate sponsor's program. In addition, NMSC identifies students with qualifications of interest to certain sponsors. Entry Forms must be filed in the same academic year as the qualifying test. If the number of Finalists eligible for a sponsor's awards is smaller than the number of awards the corporate organization wishes to offer, NMSC establishes a pool of candidates to compete for the remaining awards (Special Scholarships). These candidates are the highest scoring students who filed Entry Forms with the sponsoring organization but were not named Finalists. NMSC sends Special Scholarship application materials to these candidates through their high schools.

Each corporate sponsor specifies the monetary limits of scholarships it finances and decides whether the awards provide one-time payments or fixed stipends that can be renewed for up to four years of college undergraduate study. (See Scholarships Offered chart on page 40.)

College-sponsored Merit Scholarships

In the 2027 competition, it is expected that about 3,600 National Merit Scholarships will be offered to Finalists who plan to attend a sponsor college or university. (See the list of about 150 colleges that are currently Merit Scholarship sponsors in Colleges and Universities on page 50.) A college-sponsored scholarship is renewable for up to four years of undergraduate study at the sponsor institution. It cannot be transferred; therefore, it is canceled if a winner does not attend the college financing the award.

Officials of each sponsor institution choose award recipients from among Finalists who have been accepted for admission and have informed NMSC that the sponsor college or university is their first choice. Each college sponsor chooses the annual stipend their institution offers to award recipients, within a range of \$500 to \$2,000 per year. All college-sponsored scholarship recipients at the institution will receive the same stipend amount as determined by the college.

Scholarship Sponsors

Approximately 300 independent organizations and institutions sponsor more than two-thirds of the National Merit Scholarships offered each year. All Special Scholarships are sponsored by business organizations that also support Merit Scholarship awards.

Corporations, Business Organizations, and Individual Donors

Following is a list of corporate organizations that currently sponsor scholarships in the National Merit Program with any eligibility criteria that apply to candidates for their awards.

An asterisk (*) indicates the sponsor offers Special Scholarships in addition to National Merit Scholarships and requires students or their families to file Entry Forms.

The number of awards shown is an estimate of the yearly total, and neither the sponsor nor NMSC is obligated to offer these scholarships in 2026, 2027, or beyond.

A

- * **Acushnet Company**—3 awards for children of employees of the company and its subsidiaries.

Adient Foundation Inc.—3 awards for Finalists who are children of employees of Adient US LLC.

- * **ADP Foundation**—40 awards for children of employees of ADP.

- * **Albany International**—2 awards for children of employees of the company and its subsidiaries.

- * **Ameren Corporation Charitable Trust**—6 awards for children of employees of Ameren Corporation.

American Air Liquide Holdings, Inc.—5 awards for Finalists who are children of employees of the corporation and its subsidiaries.

- * **American City Business Journals, Inc.**—2 awards for children of employees of the corporation.

American Electric Power—5 awards for Finalists who are children of employees of the corporation and its subsidiaries.

- * **The AMETEK Foundation**—10 awards for children of employees of AMETEK, Inc. and its subsidiaries.

- * **Aon Foundation**—15 awards for children of employees of Aon and its subsidiaries.

- * **Arkema Inc. Foundation**—4 awards for children of employees of Arkema Inc. and its subsidiaries.

Aspen Technology, Inc.—3 awards for Finalists who are children of employees of the corporation and its eligible subsidiaries.

- * **Astellas US LLC**—2 awards for children of employees of the corporation and its eligible affiliates.

- * **AstraZeneca Pharmaceuticals LP**—36 awards for children of employees of AstraZeneca Pharmaceuticals LP and its eligible affiliated companies.

This corporate sponsor * offers Special Scholarships in addition to Merit Scholarship awards, and Entry Forms must be filed with the sponsor.

B

BASF Corporation—Up to 20 awards for Finalists who are children of employees of the corporation and its subsidiaries.

Battelle—Every Finalist who is the child of an employee of the company will be offered an award.

Bentley Systems, Incorporated—Every Finalist who is the child of an employee of the corporation will be offered an award.

Mary E. Beyerle Trust—7 awards for Finalists from Maryland, New Jersey, and Pennsylvania.

BNSF Railway Foundation—Up to 10 awards for Finalists who are children of employees of BNSF Corporation and its subsidiaries.

The Boeing Company—Every Finalist who is the child of an employee of the company or a subsidiary will be offered an award.

- * **Brady Corporation**—5 awards for children of employees of the corporation and its eligible subsidiaries.
- * **Bridgestone Americas Trust Fund**—Up to 50 awards for children of employees and retirees of Bridgestone Americas, Inc., and its participating subsidiaries.
- * **Bristol Myers Squibb Foundation**—50 awards for children of employees of Bristol Myers Squibb's U.S. divisions and subsidiaries.
- * **Broadridge Financial Solutions, Inc.**—6 awards for children of employees of the corporation and its qualifying subsidiaries.
- * **Brown & Brown, Inc.**—10 awards for children of employees of the corporation and its eligible subsidiaries.
- * **Bunge**—4 awards for children of employees of the corporation and its eligible subsidiaries; the awards are distributed among employment groups.
- * **Bunzl USA, LLC**—5 awards for children of employees of the corporation and its subsidiaries.

C

- * **Carlisle Companies Incorporated**—2 awards for children of employees of the corporation and its subsidiaries; the awards are distributed among employment groups.
- * **Carpenter Technology Corporation**—4 awards for children of employees of the corporation and its subsidiaries.
- * **CDK Global, LLC**—6 awards for children of employees of the corporation.
- * **Cencora, Inc.**—8 awards for children of employees of the corporation and its subsidiaries.
- Chevron U.S.A. Inc.**—5 awards for Finalists who are children of employees of the corporation and its affiliated companies.
- The Child Family**—2 awards for Finalists in the National Merit Scholarship Program.
- * **Colgate-Palmolive Company**—20 awards for children of employees of the company and its subsidiaries.
- * **Commvault Systems, Inc.**—2 awards for children of employees of the corporation.
- * **Computer Aid, Inc.**—2 awards for children of employees of CAI and its eligible subsidiaries.

This corporate sponsor * offers Special Scholarships in addition to Merit Scholarship awards, and Entry Forms must be filed with the sponsor.

- * **Corning Incorporated**—5 awards for children of employees of the corporation and its subsidiaries; the awards are distributed among employment groups.
- * **Crum & Forster**—10 awards for children of employees of the company.
- CSX Corporation**—5 awards for Finalists who are children of employees of the corporation and its eligible subsidiaries.

D

- * **Dollar Tree, Inc.**—Up to 20 awards for children of employees of the corporation and its eligible divisions; the awards are distributed among employment groups.
- Gaylord and Dorothy Donnelley Foundation**—1 award for a Finalist from a designated county in South Carolina.

E

- * **Eaton Charitable Fund**—15 awards for children of employees of Eaton Corporation.
- * **ECMS**—3 awards for children of employees of the corporation and its subsidiaries.
- Ellucian Company L.P.**—2 awards for Finalists who are children of employees of the company.
- Emerson Charitable Trust**—10 awards for Finalists who are children of employees of Emerson Electric Co. and its subsidiaries.
- * **The Estée Lauder Companies Inc.**—3 awards for children of employees of the corporation and its U.S. affiliates and subsidiaries.
- * **Eversource Energy Foundation, Inc.**—10 awards for children of employees of the company or its subsidiaries.

F

- * **Federal Express Corporation**—38 awards for children of employees of the corporation and eligible affiliated business units.
- * **Fifth Third Foundation**—25 awards for children of employees of Fifth Third Bank.
- Fluor Foundation**—4 awards for Finalists who are children of employees of Fluor and its eligible subsidiaries.
- * **FMC Corporation**—4 awards for children of employees of the corporation and its subsidiaries.
- Formosa Plastics Corporation, U.S.A.**—Every Finalist who is the child of an employee of the corporation or an affiliated organization will be offered an award.
- * **Fox News Channel, LLC**—2 awards for children of employees of the corporation and its eligible subsidiaries.
- FTS International, LLC**—1 award for a Finalist from either Washington, DC, or Denver, Colorado, metropolitan areas planning to pursue certain college majors.

This corporate sponsor * offers Special Scholarships in addition to Merit Scholarship awards, and Entry Forms must be filed with the sponsor.

G

- * **GAF-2** awards for children of employees of the corporation and its subsidiaries; the awards are distributed among divisions.
- * **Gates Industrial Corporation Foundation**—Up to 10 awards for children of employees of Gates Industrial Corporation and its subsidiaries; the awards are distributed among the employment base.
GEICO Philanthropic Foundation—3 awards for Finalists who are children of associates of GEICO Corporation and its subsidiaries.
- General Dynamics Corporation**—Every Finalist who is the child of an employee of the corporation or a subsidiary will be offered an award.
- * **General Dynamics Ordnance and Tactical Systems**—2 awards for children of employees of the corporation and its subsidiaries.
- * **Gleason Family Foundation**—Up to 8 awards for children of employees and retirees of Gleason Corporation and its U.S. subsidiaries and divisions.
- * **Global Tungsten & Powders LLC**—2 awards for children of employees of Global Tungsten & Powders LLC and Plansee Group Functions America's Corp.
- * **W.W. Grainger, Inc.**—12 awards—10 awards for children of employees of the corporation and its U.S. subsidiaries; 2 awards for Finalists in the National Merit Scholarship Program.
- * **Greyhound Lines, Inc.**—Up to 6 awards for children of employees of the corporation and its subsidiaries.

H

- * **Hormel Foods Corporation Charitable Trust**—Up to 18 awards for children of employees of Hormel Foods Corporation and its subsidiaries.
- * **The Hubbell Foundation**—4 awards for children of employees of Hubbell Incorporated and its subsidiaries.
- * **Hunter Industries Incorporated**—2 awards for children of employees of the corporation and its subsidiaries.

I

- * **Illinois Tool Works Inc.**—Up to 30 awards for children of employees of ITW and its subsidiaries.
- * **Ingalls Shipbuilding Division of Huntington Ingalls Industries**—4 awards for children of employees of Ingalls Shipbuilding.
- * **Insperty Services, L.P.**—4 awards—2 awards for children of corporate employees; 2 awards for children of worksite employees.

J

- * **JBT Marel Corporation**—2 awards for children of employees of the corporation and its subsidiaries.
- * **Johnson & Johnson Services Inc.**—20 awards for children of employees of the corporation and its business units.

This corporate sponsor * offers Special Scholarships in addition to Merit Scholarship awards, and Entry Forms must be filed with the sponsor.

K

- * **Kaman Corporation**—3 awards for children of employees of the corporation and its subsidiaries.

L

L3Harris Technologies—2 awards for Finalists who are children of employees of the company and its subsidiaries.

- * **LANXESS Corporation**—5 awards for children of employees of LANXESS Corporation, LANXESS Solutions, Great Lakes Chemical Corporation, and each corporation's respective subsidiaries.

Leidos, Inc.—10 awards for Finalists who are children of employees of the corporation or its subsidiaries.

- * **Liberty Mutual Scholarship Foundation**—50 awards for children of employees of Liberty Mutual Insurance Company and its subsidiaries.

- * **Loews Corporation**—4 awards for children of employees of the corporation and its divisions and wholly owned subsidiaries.

- * **LPL Financial LLC**—6 awards for children of associates of the corporation and its eligible subsidiaries.

The Lubrizol Foundation—Every Finalist who is the child of an employee of The Lubrizol Corporation, Lubrizol Specialty Products, Inc., and their eligible subsidiaries will be offered an award.

M

- * **Mannington Mills, Inc.**—2 awards for children of employees of the corporation and its eligible subsidiaries.

- * **Marsh McLennan**—Up to 25 awards for children of employees of the corporation and its subsidiaries.

- * **McGraw Hill LLC**—4 awards for children of employees of the corporation and its affiliates.

Mead Witter Foundation, Inc.—2 awards for Finalists from specified geographic areas of Wisconsin.

MH Mediate—2 awards for Finalists in the National Merit Scholarship Program.

The MITRE Corporation—4 awards for Finalists who are children of employees of the corporation.

Motorola Solutions Foundation—10 awards for Finalists who are children of employees of Motorola Solutions, Inc., or its subsidiaries.

N

National Distillers Distributors Foundation—7 awards for Finalists in the National Merit Scholarship Program.

- * **(National Gypsum Company) C. D. Spangler Foundation, Inc.**—2 awards for children of employees of National Gypsum Company and its subsidiaries.

- * **Nationwide Foundation**—10 awards for children of employees of Nationwide Insurance Companies and certain affiliates and associated companies.

This corporate sponsor * offers Special Scholarships in addition to Merit Scholarship awards, and Entry Forms must be filed with the sponsor.

* **New Jersey Manufacturers Insurance Company**—At least 3 awards for children of employees of New Jersey Manufacturers Insurance Group.

* **The NewMarket Foundation**—2 awards for children of employees of NewMarket Corporation and its subsidiaries.

* **NextEra Energy Foundation, Inc.**—10 awards for children of employees of NextEra Energy, Inc. and its subsidiaries.

* **NiSource Charitable Foundation**—15 awards for children of employees of NiSource and its subsidiaries.

Norfolk Southern Foundation—Every Finalist who is the child of an employee or retiree of Norfolk Southern Corporation or an affiliated company will be offered an award.

* **Northrop Grumman Corporation**—55 awards for children of employees of the corporation and its subsidiaries.

NOV Inc.—Every Finalist who is the child of an employee of the corporation and its eligible subsidiaries will be offered an award.

* **Novo Nordisk Inc.**—3 awards for children of employees of the corporation and its participating affiliates.

NVIDIA Corporation—Every Finalist who is the child of an employee of the corporation or an eligible subsidiary will be offered an award.

O

Occidental Petroleum Corporation—6 awards for Finalists who are children of employees of the corporation or an eligible division or subsidiary.

* **Omron Foundation, Inc.**—5 awards for children of employees of Omron.

Owens Corning Foundation—Every Finalist who is the child of an employee of Owens Corning will be offered an award.

P

* **Paramount Global**—5 awards for children of employees of the corporation and its eligible subsidiaries.

Parker Hannifin Foundation—Every Finalist who is the child of an employee of Parker Hannifin Corporation or a subsidiary will be offered an award.

The PepsiCo Foundation, Inc.—Every Finalist who is the child of an employee of PepsiCo, Inc., or a division, subsidiary, or affiliate will be offered an award.

* **Pfizer Inc.**—50 awards for children of employees of the corporation and its subsidiaries.

* **Pilkington North America, Inc.**—2 awards for children of employees of the corporation and its subsidiaries.

* **PPG Foundation**—57 awards—Up to 35 awards for children of employees of PPG and its subsidiaries; 22 awards for residents of communities where PPG has operations.

Principal Life Insurance Company—Every Finalist who is the child of an employee of the company or an affiliate will be offered an award.

Public Service Enterprise Group—2 awards for Finalists who are children of employees of Public Service Enterprise Group or its subsidiaries.

This corporate sponsor * offers Special Scholarships in addition to Merit Scholarship awards, and Entry Forms must be filed with the sponsor.

R

- * **Research Triangle Institute**—2 awards for children of employees of the institute.
- * **Reynolds American Foundation**—Up to 20 awards for children of employees of Reynolds American Inc. and its eligible subsidiaries.
- * **Rheem Manufacturing Company**—5 awards for children of employees of the company and its subsidiaries.
- Robert Half Inc.**—2 awards for Finalists who are children of employees of the corporation and its eligible subsidiaries.
- Rockwell Automation Charitable Corporation**—5 awards for Finalists who are children of employees of Rockwell Automation and its subsidiaries.
- RSM US LLP**—2 awards for Finalists who are children of employees of the corporation and its eligible subsidiaries.

S

- * **Schindler Elevator Corporation**—5 awards for children of employees of the corporation.
- * **Schneider Electric North America Foundation**—15 awards for children of employees of Schneider Electric North America.
- * **Sensient Technologies Foundation**—3 awards for children of employees of Sensient Technologies Corporation and its divisions and subsidiaries.
- * **Sentry Insurance Foundation, Inc.**—5 awards for children of employees of Sentry Insurance Group and its eligible subsidiaries.
- Siemens Foundation**—Every Finalist who is the child of an employee of Siemens Corporation or an eligible affiliated company will be offered an award.
- * **Snap-on Incorporated**—6 awards for children of employees and dealers of the corporation.
- Sogeti USA**—Every Finalist who is the child of an employee of the corporation will be offered an award.
- * **Sony Electronics Inc.**—3 awards for children of employees of Sony Electronics Inc. and Sony Corporation of America.
- South Carolina Sports Medicine & Orthopaedic Center**—2 awards—first preference for Finalists who are children of employees of the practice; second preference for Finalists from the Greater Charleston area of South Carolina.
- Southern Company Services, Inc.**—Every Finalist who is the child of an employee of Southern Company or a subsidiary will be offered an award.
- Specialty Materials Inc.**—2 awards for Finalists from Massachusetts or New Hampshire planning to major in materials engineering or materials science.
- Spirit AeroSystems, Inc.**—7 awards for Finalists who are children of employees of the corporation and its eligible subsidiaries.
- * **State Farm Companies Foundation**—100 awards for children of employees and insurance agents of State Farm Companies.
- Stronger Minds Foundation**—1 award for a Finalist from a designated area of the state of Georgia pursuing a college major in bioengineering or biomedical engineering.

This corporate sponsor * offers Special Scholarships in addition to Merit Scholarship awards, and Entry Forms must be filed with the sponsor.

- * **Suburban Propane, L.P.**—3 awards for children of employees of the company.
- * **Synthomer Foundation**—3 awards for children of employees of Synthomer plc.

T

Teachers Insurance and Annuity Association of America—15 awards for Finalists who are children of employees of TIAA and its eligible subsidiaries.

Texas Instruments Foundation—Every Finalist who is the child of an employee or retiree of Texas Instruments Incorporated will be offered an award.

- * **Textron Charitable Trust**—10 awards for children of employees of Textron, Inc. and its subsidiaries.
- * **3M Company**—40 awards for children of employees of the company and its affiliates and subsidiaries.
- * **The Travelers Employees' Club**—10 awards for children of members of The Travelers Employees' Club.
- * **Tredegar Corporation**—3 awards for children of employees of the corporation and its subsidiaries.
- * **Truist Financial Corporation**—30 awards for children of employees of the corporation.
- TTEC Foundation**—2 awards for Finalists who are children of employees of TTEC Holdings, Inc.

U

United Services Automobile Association—Every Finalist who is the child of an employee of the company will be offered an award.

- * **USG Foundation, Inc.**—8 awards for children of employees of USG Corporation and its subsidiaries.

V

- * **Vulcan Materials Company Foundation**—3 awards for children of employees of Vulcan Materials Company and its subsidiaries.

W

Walgreen Co.—Every Finalist who is the child of an employee of the company will be offered an award.

Waste Management National Services Inc.—Every Finalist who is the child of an employee of Waste Management National Services Inc.'s family of companies will be offered an award.

Westlake—2 awards for Finalists who are children of employees of the corporation and its eligible subsidiaries.

X-Z

- * **Zoetis Inc.**—5 awards for children of colleagues of the corporation.

Colleges and Universities

The higher education institutions listed below currently sponsor National Merit Scholarships. The number in parentheses reflects the minimum number of Merit Scholarship awards NMSC expects the college to offer annually. However, neither the institution nor NMSC is obligated to offer these scholarships in 2026, 2027, or beyond.

A–B

Abilene Christian University (3)
 American University (5)
 Arizona State University (85)
 Auburn University (35)
 Belmont University (3)
 Boston University (15)
 Bowdoin College (3)
 Bradley University (3)
 Brandeis University (10)
 Brigham Young University (10)
 Bucknell University (3)

C–E

Calvin University (5)
 Carleton College (40)
 Case Western Reserve University (25)
 Centre College (3)
 Claremont McKenna College (8)
 Clemson University (25)
 Colby College (Maine) (3)
 College of Charleston (3)
 College of Wooster (3)
 Colorado College (6)
 Colorado State University (3)
 Creighton University (3)
 Davidson College (10)
 DePauw University (3)
 Drake University (3)
 Embry-Riddle Aeronautical University,
 and identified campuses (3)
 Emory University (20)

F–H

Florida Atlantic University (3)
 Florida International University (3)
 Florida State University,
 and identified campuses (15)
 Fordham University (3)
 Furman University (5)
 Grinnell College (15)
 Gustavus Adolphus College (3)
 Harding University (5)
 Harvey Mudd College (30)
 Hendrix College (3)
 Hillsdale College (10)
 Hope College (3)

I–N

Indiana University Bloomington (6)
 Iowa State University (25)
 Kalamazoo College (3)
 Kansas State University (5)
 Kenyon College (5)
 Lawrence University (Wisconsin) (3)
 Lehigh University (3)
 Liberty University (3)
 Louisiana State University (25)
 Louisiana Tech University (3)
 Loyola University Chicago (3)
 Luther College (3)
 Macalester College (10)
 Marquette University (3)
 Michigan State University (35)
 Michigan Technological University (3)

Mississippi State University (10)
 Missouri University of Science
 and Technology (9)
 Montana State University-Bozeman (3)
 New College of Florida (3)
 North Dakota State University (5)
 Northeastern University
 (Massachusetts) (3)

O–R

Oberlin College (15)
 Occidental College (3)
 Ohio University-Athens (3)
 Oklahoma Christian University (3)
 Oklahoma State University (10)
 Franklin W. Olin College of
 Engineering (3)
 Ouachita Baptist University (3)
 Pennsylvania State University,
 and identified campuses (5)
 Pomona College (4)
 Purdue University,
 and identified campuses (30)
 Rensselaer Polytechnic Institute (15)
 Rhodes College (11)
 Rochester Institute of Technology (10)
 Rose-Hulman Institute of Technology (15)
 Rutgers, The State University of New
 Jersey, and identified campuses (15)

S–T

Saint Louis University (3)
 St. Olaf College (10)
 Samford University (3)
 Southern Methodist University (15)
 Stony Brook University (15)
 Tennessee Technological University (3)
 Texas A&M University,
 and identified campuses (110)

Texas Christian University (3)
 Texas Tech University (3)
 Trinity University (Texas) (3)
 Truman State University (3)
 Tufts University (10)
 Tulane University (20)

U

University of Alabama at Birmingham (5)
 University of Alabama in Huntsville (5)
 University of Alabama at Tuscaloosa (115)
 University of Arizona (55)
 University of Arkansas, Fayetteville (30)
 University of Central Florida (10)
 University of Dallas (3)
 University of Dayton (3)
 University of Evansville (3)
 University of Florida (20)
 University of Georgia Foundation (20)
 University of Houston-Main Campus (10)
 University of Idaho (15)
 University of Iowa (20)
 University of Kansas (20)
 University of Kentucky (60)
 University of Louisville (12)
 University of Maine (3)
 University of Maryland,
 and identified campuses (15)
 University of Miami (15)
 University of Minnesota,
 and identified campuses (36)
 University of Mississippi (10)
 University of Missouri-Columbia (20)
 University of Montana-Missoula (3)
 University of Nebraska-Lincoln (20)
 University of Nevada, Las Vegas (3)
 University of Nevada, Reno (3)

University of New Mexico (3)

University of North Dakota (3)

University of North Texas (3)

University of Oklahoma,
and identified campuses (80)

University of Oregon (6)

University of Pittsburgh (3)

University of Puget Sound (3)

University of St. Thomas (Minnesota) (3)

University of South Carolina-Columbia (8)

University of South Florida (12)

University of Southern California (35)

University of Southern Mississippi (3)

University of Tennessee, Knoxville (15)

University of Texas at Dallas (100)

University of Tulsa (15)

University of Utah (20)

University of Wisconsin-Madison (10)

University of Wyoming (3)

V-Z

Valparaiso University (3)

Vanderbilt University (18)

Villanova University (5)

Virginia Commonwealth University (3)

Washington and Lee University (15)

Washington State University (3)

Wayne State University (Michigan) (3)

West Virginia University
Foundation, Inc. (12)

Wheaton College (Illinois) (20)

Wichita State University (3)

Wofford College (3)