



Scoring Your Paper SAT Practice Test #10

Congratulations on completing an SAT[®] practice test. To score your test, follow the instructions in this guide.

IMPORTANT: This scoring guide is for students who completed the paper version of this digital SAT practice test.

1 Total Score 400–1600 Scale	Total Score	
2 Section Scores 200–800 Scale	Reading and Writing	Math
	Modules 1 & 2	Modules 1 & 2

Scores Overview

Each assessment in the SAT Suite (SAT, PSAT/NMSQT[®], PSAT[™] 10, and PSAT[™] 8/9) reports test scores on a common scale.

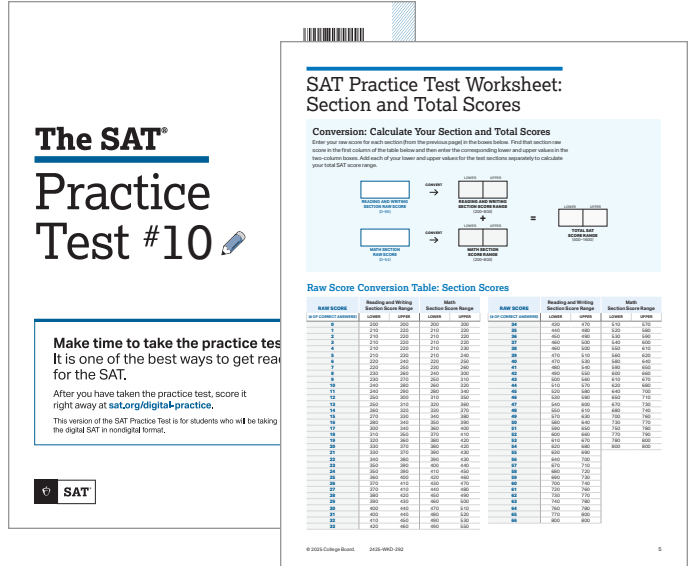
For more details about scores, visit sat.org/scores.

How to Calculate Your Practice Test Scores

The worksheets on pages 4 and 5 help you calculate your test scores.

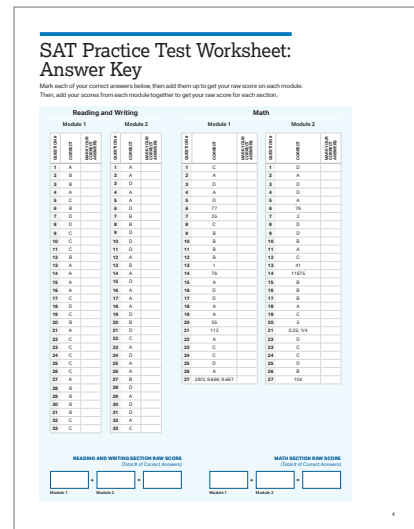
GET SET UP

- 1 In addition to your practice test, you'll need the answer key and conversion table at the end of this guide.



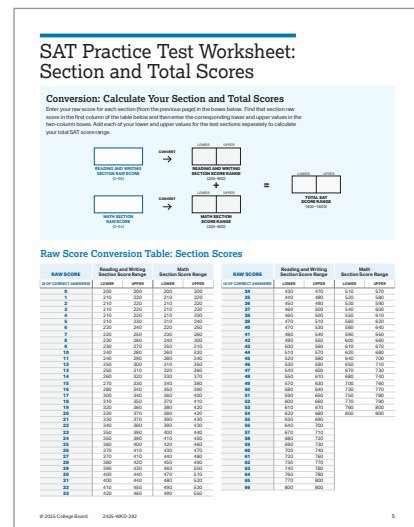
SCORE YOUR PRACTICE TEST

- 2 Compare your answers to the answer key on page 4, and count up the total number of correct answers for each section. Write the number of correct answers for each section in the boxes at the bottom of that section.



CALCULATE YOUR SCORES

- 3 Using your marked-up answer key and the conversion table, follow the directions on page 5 to get your section and total scores.



Get Section and Total Scores

Section and total scores for this paper version of the digital SAT practice test are expressed as ranges. That's because the scoring method described in this guide is a simplified (and therefore slightly less precise) version of the one used in the actual test.

GET YOUR READING AND WRITING SECTION SCORE

Calculate your SAT Reading and Writing section score (it's on a scale of 200–800).

- 1 Use the answer key on page 4 to find the number of questions in module 1 and module 2 that you answered correctly.
- 2 To determine your Reading and Writing raw score, add the number of correct answers you got in module 1 and module 2.
- 3 Use the Raw Score Conversion Table: Section Scores on page 5 to turn your raw score into your Reading and Writing section score.
- 4 The lower and upper values associated with your raw score establish the range of scores you might expect to receive had this been an actual test.

GET YOUR MATH SECTION SCORE

Calculate your SAT Math section score (it's on a scale of 200–800).

- 1 Use the answer key on page 4 to find the number of questions in module 1 and module 2 that you answered correctly.
- 2 To determine your Math raw score, add the number of correct answers you got in module 1 and module 2.
- 3 Use the Raw Score Conversion Table: Section Scores on page 5 to turn your raw score into your Math section score.
- 4 The lower and upper values associated with your raw score establish the range of scores you might expect to receive had this been an actual test.

GET YOUR TOTAL SCORE

Add together the lower values for the Reading and Writing and Math sections, and then add together the upper values for the two sections. The result is your total score, expressed as a range, for this SAT practice test. The total score is on a scale of 400–1600.

1 Total Score 400–1600 Scale	Total Score	
2 Section Scores 200–800 Scale	Reading and Writing	Math
	Modules 1 & 2	Modules 1 & 2

Your total score on this SAT practice test is the sum of your Reading and Writing section score and your Math section score. For this practice test, you'll receive a lower and upper score for each test section and the total score. This is the range of scores that you might expect to receive.



Use the worksheets on pages 4 and 5 to calculate your section and total scores.

SAT Practice Test Worksheet: Answer Key

Mark each of your correct answers below, then add them up to get your raw score on each module.
Then, add your scores from each module together to get your raw score for each section.

Reading and Writing

Module 1

QUESTION #	CORRECT	MARK YOUR CORRECT ANSWERS
1	A	
2	B	
3	B	
4	A	
5	C	
6	B	
7	D	
8	D	
9	C	
10	C	
11	C	
12	B	
13	A	
14	A	
15	A	
16	A	
17	C	
18	D	
19	C	
20	B	
21	A	
22	C	
23	C	
24	C	
25	C	
26	C	
27	A	
28	B	
29	B	
30	B	
31	B	
32	C	
33	C	

Module 2

QUESTION #	CORRECT	MARK YOUR CORRECT ANSWERS
1	A	
2	A	
3	D	
4	A	
5	A	
6	D	
7	B	
8	B	
9	D	
10	D	
11	D	
12	A	
13	B	
14	A	
15	D	
16	A	
17	A	
18	A	
19	D	
20	B	
21	D	
22	C	
23	A	
24	D	
25	A	
26	A	
27	B	
28	D	
29	A	
30	D	
31	D	
32	A	
33	C	

Math

Module 1

QUESTION #	CORRECT	MARK YOUR CORRECT ANSWERS
1	C	
2	A	
3	D	
4	A	
5	D	
6	77	
7	25	
8	C	
9	B	
10	B	
11	B	
12	B	
13	1	
14	76	
15	A	
16	D	
17	D	
18	A	
19	A	
20	35	
21	113	
22	A	
23	C	
24	C	
25	D	
26	A	
27	29/3; 9.666; 9.667	

Module 2

QUESTION #	CORRECT	MARK YOUR CORRECT ANSWERS
1	D	
2	A	
3	D	
4	D	
5	A	
6	79	
7	2	
8	D	
9	D	
10	B	
11	A	
12	C	
13	41	
14	11875	
15	B	
16	B	
17	B	
18	A	
19	C	
20	5	
21	0.25; 1/4	
22	D	
23	C	
24	C	
25	D	
26	B	
27	104	

READING AND WRITING SECTION RAW SCORE
(Total # of Correct Answers)

	+		=	
--	---	--	---	--

Module 1

Module 2

MATH SECTION RAW SCORE
(Total # of Correct Answers)

	+		=	
--	---	--	---	--

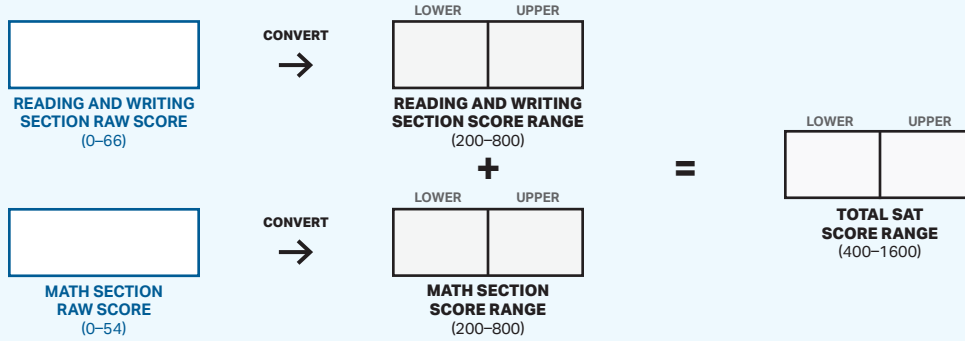
Module 1

Module 2

SAT Practice Test Worksheet: Section and Total Scores

Conversion: Calculate Your Section and Total Scores

Enter your raw score for each section (from the previous page) in the boxes below. Find that section raw score in the first column of the table below and then enter the corresponding lower and upper values in the two-column boxes. Add each of your lower and upper values for the test sections separately to calculate your total SAT score range.



Raw Score Conversion Table: Section Scores

RAW SCORE (# OF CORRECT ANSWERS)	Reading and Writing Section Score Range		Math Section Score Range		RAW SCORE (# OF CORRECT ANSWERS)	Reading and Writing Section Score Range		Math Section Score Range	
	LOWER	UPPER	LOWER	UPPER		LOWER	UPPER	LOWER	UPPER
0	200	200	200	200	34	430	470	510	570
1	210	220	210	220	35	440	480	520	580
2	210	220	210	220	36	450	490	530	590
3	210	220	210	220	37	460	500	540	600
4	210	220	210	230	38	460	500	550	610
5	210	230	210	240	39	470	510	560	620
6	220	240	220	250	40	470	530	580	640
7	220	250	230	260	41	480	540	590	650
8	230	260	240	300	42	490	550	600	660
9	230	270	250	310	43	500	560	610	670
10	240	280	260	320	44	510	570	620	680
11	240	290	280	340	45	520	580	640	700
12	250	300	310	350	46	530	590	650	710
13	250	310	320	360	47	540	600	670	730
14	260	320	330	370	48	550	610	680	740
15	270	330	340	380	49	570	630	700	760
16	280	340	350	390	50	580	640	730	770
17	300	340	360	400	51	590	650	750	780
18	310	350	370	410	52	600	660	770	790
19	320	360	380	420	53	610	670	780	800
20	330	370	380	420	54	620	680	800	800
21	330	370	390	430	55	630	690		
22	340	380	390	430	56	640	700		
23	350	390	400	440	57	670	710		
24	350	390	410	450	58	680	720		
25	360	400	420	460	59	690	730		
26	370	410	430	470	60	700	740		
27	370	410	440	480	61	720	760		
28	380	420	450	490	62	730	770		
29	390	430	460	500	63	740	780		
30	400	440	470	510	64	760	780		
31	400	440	480	520	65	770	800		
32	410	450	490	530	66	800	800		
33	420	460	490	550					